

Fish diversity and assemblages according to distance from source along a coastal river gradient (Ehania River; south-east of Ivory Coast)

Konan K.F.^{1,2,3}; Edia O.E.¹; Bony K.Y.^{1,2}; Kouamé K.M.^{1,3};
Gourène G.¹

Received: May 2013

Accepted: December 2014

Abstract

Fish assemblage was investigated during the study of longitudinal profile of the Ehania River Basin in south-eastern Côte d'Ivoire. This area is subjected to intense human activities with many plantations (palm tree, banana, pineapple, coffee, rubber and cocoa). Samples were collected, with gillnets of different mesh sizes, through 6 sampling surveys during dry and rainy seasons from February 2010 to December 2010 at 6 sampling sites. A total of 70 fish species belonging to 48 genera, 28 families and 10 orders were recorded. The temporal variation of diversity index is less marked than spatial variation. The upstream, with 35 species, was less rich in species than the medium area and downstream areas (respectively 46 and 68). The upstream and downstream areas gathered 35 species. Thirty three species were common to the upper and middle areas and 46 species appeared both in the lower courses and the middle area. The 21 species restricted to the lower part of the river are mainly estuarine/marine origin. The beta diversity value revealed low similarity between the lower and upper course of Ehania River. The lowest values of Shannon's diversity index and equitability index were observed in the middle part of the River which characterized by high population density and intense agricultural activity with many plantations.

Keywords: Fish assemblages, Diversity, Spatial gradients, Artisanal dams, Anthropogenic impact, Coastal river, West Africa

1-Laboratory of aquatic environment and biology, department of sciences and environment management, University Nanguy Abrogoua, 02 BP 801 Abidjan 02, Ivory Coast.

2-Department of environment, University Jean Lorougnon Guédé, BP 150 Daloa, Ivory Coast.

3-Water and sanitation for Africa, National Representation of Côte d'Ivoire, 18 BP 80 Abidjan 18, Ivory Coast.

*Corresponding author's email: konanfelix@yahoo.fr.

Introduction

Study of factors structuring biological communities has a rich and long history. Reyjol *et al.* (2005) noted that, as ecosystems are structured both spatially and temporally, one of the major questions when studying an ecosystem and its component organisms is the strategy of its occupation with respect to space and time. Increasingly, bio-assessment measures have become a widely shared tool to estimate the ecological condition and identify impacts to aquatic organisms in the river systems (Tejerina-Garro *et al.*, 2005; Flinders *et al.*, 2008). This technique has advantages with regard to more traditional methods of evaluating water quality and pollution loading because of its ability to detect low level and non-point source pollutants (Barbour *et al.*, 1999), physical habitat alteration (Kutka and Richards, 1996; Nerbonne and Vondracek, 2001), and long-term ecosystem effects of disturbance events (Barbour *et al.*, 1999). Moreover, the growing environmental awareness has led to an increase in demand by water resource managers for ecological information on which to base management plans and decisions (Simon, 2000). Indeed, unless living resources in general and in particularly those of hydrosystems are used and managed rationally, natural production faces the risk of collapsing (Yapi-Gnaoré *et al.*, 2000). Because the fish assemblages are strongly influenced by physical habitat, they have long been used to quantify the effects of disturbance on the environment (Karr,

1981). Disturbance to physical habitat (Marchetti and Moyle, 2001; Quist *et al.*, 2003) and water quality (Rabeni and Smale, 1995; Bonner and Wilde, 2002; Ebrahimi and Taherianfard, 2011) have resulted in fish assemblage shifts, decreased native species diversity, community homogenization, range reduction and extinction. Fish assemblage structures such as guilds (feeding, reproduction, behavior, etc.) can be used to determine habitat degradation associated with nonpoint source pollution (Moyle, 1994). Moreover, understanding spatial patterns in fish assemblage structure is critical for the conservation and management of native fish (Jackson *et al.*, 2001; Wright and Li, 2002).

In West Africa, many streams that drain the coastal regions are an important resource for human populations, especially in rural areas. Indeed, these rivers are used for domestic activities (drinking, cooking, bathing...), agriculture (irrigation, cattle drinking); and fish constitute an important food resource for local population (Konan *et al.*, 2006; Konan *et al.*, 2013). However, in this region freshwater resources are under pressure from a multitude of stressors. The watershed of the Ehania River, subject of this study, is particularly under multiple forms of human pressure. Indeed, its catchment area shelters large plantations of palm tree, banana, rubber, cocoa, and coffee. It is also the place of discharge of domestic and some industrial waste. These anthropogenic

pressures could profoundly affect the integrity of both water resources and its biodiversity. To expand the scope for assessing the potential impacts human stresses impose on freshwater ecosystems, it is imperative to collect relevant information, both on water resource and its contains living. Ibanez *et al.* (2007) pointed out that to ensure a sound management and sustainable exploitation of freshwater biodiversity, it is vital to develop a deeper understanding of the factors and processes that determine aquatic diversity at different spatial scales.

The purpose of this study was to characterize the spatial and seasonal patterns in fish assemblage structure in Ehania River and to discuss conservation implications.

Materials and methods

Study area and sampling sites

The Ehania River, located (05°17'–05°43' N and 02°46'–03°03' W) in the South-East of the Côte d'Ivoire (Fig. 1),

belongs to the Western Guinean ichtyoregion, sector Eburnéo-Ghanaian (Daget and Iltis, 1965; Hugueny and Lévêque, 1994; Paugy *et al.*, 1994). This small coastal river is located in lowland rainforest. The Ehania River, a tributary of the Tano River, has a catchment area of 1050 km², a main-channel total length of 140 km and a slope of 2.36 m.km⁻¹. Its mean annual flow corresponds to 15.7 m³.s⁻¹ (dry season: 14.3 m³.s⁻¹; rainy season: 19.8 m³.s⁻¹). Five sampling sites were retained in the main-channel from upstream to downstream areas of the stream (Fig. 1). The sixth station is located on the Tano River, approximately 1.5 km downstream of the river mouth Ehania. Table 1 gives some characteristics of sampling sites. Canopy closure was relatively high in upstream and downstream sites (60–80%), medium in middle sites (40–60%) and human activities occurred mostly in middle courses of Ehania basin (Konan *et al.*, 2006; Konan, 2008).

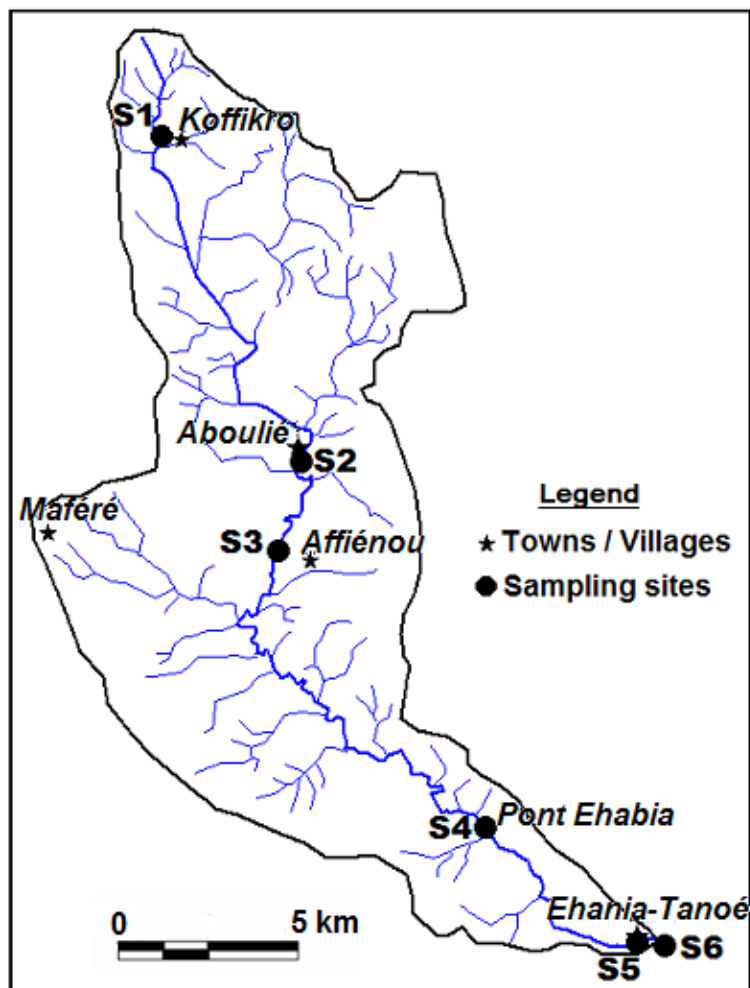


Figure 1: Location of Ehania River and the sampling sites (S1 to S6).

Table 1: Some characteristics of sampling stations identified on the river Ehania.

Sites	Position of site on river	Distance of source (km)	*Canopy (%)	*Influence of human activities (%)
S1	upstream	7.2	70	65
S2	middle stream	41.2	60	85
S3	middle stream	53.5	40	95
S4	downstream	107.9	60	2
S5	downstream	139	80	50
S6	downstream	140.5	60	5

S1 to S6 = sampling sites. *sources: (Konan *et al.*, 2006; Konan, 2008)

Fish sampling

Samples were collected during 6 sampling surveys from February 2010 to December 2010 (i.e. 3 during the rainy season (April, June, October) and 3 during the dry season (February, August,

December)). The 6 sampling sites were sampled during each survey. Each site was also characterized spatially by its distance from the source. The sites covered a river section of approximately 1.5 km in length (i.e. reach scale). This

river section length was selected to cover a fair degree of habitat heterogeneity.

Fish were collected with two sets of 8 gillnets of varying mesh (12 mm to 45 mm knot to knot, stretched mesh size), allowing the capture of almost all the fish longer than 80 mm total length. These gillnets were 30 m long and 1.5 m high. At each sampling occasion, fishing was done overnight (17.00 to 7.00). All fish specimens were identified according to the identification keys of Paugy *et al.* (2003). Each specimen was measured (standard length) to the nearest mm and weighed to the nearest gram.

Data analysis

Species turnover analysis is important because it shows the degree to which habitats have been partitioned by species; β -diversity values may be used to compare habitat diversity between different systems; with α -diversity, β -diversity measure total diversity, or the biotic heterogeneity of a specific area (Wilson and Shmida, 1984). Beta diversity index (Harrison *et al.*, 1992) was used to examine the pairwise differentiation between sampling zones: $\beta_H = ((S/\alpha) - 1) \cdot (N - 1) * 100$; where S is the number of species in the two sites combined; α is the average richness of the two; N is the number of sites. Harrison *et al.* (1992) ranges β_H from 0 (complete similarity) to 100 (complete dissimilarity).

Using Shannon's diversity index (Shannon and Weaver, 1963) and equitability index (Pielou, 1969), we made a comparative study of the spatial

and temporal variations of the diversity of fish population along the river:

- $H' = -\sum q_i \text{Log}_2(q_i)$; where q_i is the relative abundance of each species;
- $E = H' / \text{Log}_2(R_s)$; where H' is the Shannon's diversity index and R_s is the total number of species.

Between-sampling sites, differences in species richness (number of species, Shannon diversity and equitability) were evaluated using the Kruskal-Wallis test, a non-parametric analysis of variance, followed by Mann-Whitney test to identify specific differences. Shannon's diversity index, equitability index and all statistical analyses were carried out by the software Paleontological Statistic (PAST) version 2.15 (Hammer *et al.*, 2001).

Results

Fish species composition

The composition of fish population (species, genera, families, order) sampled during this study is shown in Table 2. A total of 70 fish species belonging to 48 genera, 28 families and 10 orders were captured in Ehania River. The most abundant order was Perciformes with 39% of all captured families and 40% of all species. It is followed by Siluriformes (18% of families and 19% of species), Osteoglossiformes (11% and 16%), and Characiformes (7% and 10%). Only one family belonging to Cypriniformes, accounted for 9% of species. Among the families collected, Cichlidae (19% of species), Mormyridae (13%), Alestidae (9%), Cyprinidae (9%) and Clariidae

(7%) are largely represented. Twenty eight marine/brackish species (i.e. 40% of the species) were collected, as well as two introduced species (*Oreochromis niloticus* and *Heterotis niloticus*).

Table 2: Fish species collected in the Ehania River during this study.

	Sampling zones					
	Upstream		Middle zone		Downstream	
	S1	S2	S3	S4	S5	S6
Perciformes						
Anabantidae						
<i>Ctenopoma petherici</i>	17	0	17	33	67	83
Channidae						
<i>Parachanna obscura</i>	100	83	50	83	50	33
Eleotridae						
<i>Eleotris senegalensis</i> *	0	0	0	50	17	33
<i>Kribia nana</i> *	0	0	0	0	0	67
Gerreidae						
<i>Eucinostomus melanopterus</i> *	0	0	0	0	67	100
Gobiidae						
<i>Awaous lateristriga</i> *	0	0	0	0	67	83
<i>Sicydium crenilabrum</i> *	0	0	0	0	0	67
Monodactylidae						
<i>Monodactylus sebae</i> *	0	0	0	0	67	67
Polynemidae						
<i>Polydactylus quadrifilis</i> *	0	0	0	0	67	83
Haemulidae						
<i>Pomadasys jubelini</i> *	0	0	0	0	83	100
<i>Pomadasys perotai</i> *	0	0	0	0	67	100
Carangidae						
<i>Caranx hippos</i> *	0	0	0	0	83	83
<i>Hemicaranx bicolor</i> *	0	0	0	0	100	100
<i>Trachinotus teraia</i> *	0	0	0	0	67	67
Cichlidae						
<i>Chromidotilapia guntheri</i>	83	83	83	83	83	83
<i>Hemichromis fasciatus</i>	83	67	83	83	67	100
<i>Sarotherodon galileus</i> *	50	0	0	0	67	100
<i>Sarotherodon melanotheron</i> *	0	0	0	33	17	17
<i>Oreochromis niloticus</i> **	50	50	67	50	50	100
<i>Tilapia busumana</i>	0	17	0	33	67	67
<i>Tilapia guineensis</i> *	0	17	67	50	100	100
<i>Tilapia mariae</i>	17	83	67	83	83	100
<i>Tilapia zillii</i>	17	33	17	33	67	100
<i>Thysochromis ansorgii</i> *	0	0	0	33	50	33
<i>Tylochromis intermédius</i> *	0	0	0	0	83	100
<i>Tylochromis jentinki</i> *	0	0	0	0	50	100

Tabale 2 continued :

<i>Tylochromis leonensis</i> *	0	0	0	0	17	83
Lutjanidae						
<i>Lutjanus goreensis</i> *	0	0	0	0	0	50
Siluriformes						
Malapteruridae						
<i>Malapterurus electricus</i>	67	50	33	50	17	67
Claroteidae						
<i>Chrysichthys maurus</i>	0	17	33	17	50	67
<i>Chrysichthys nigrodigitatus</i>	0	17	50	33	83	83
<i>Chrysichthys sp.</i>	0	17	0	17	33	33
Mochokidae						
<i>Synodontis bastiani</i>	0	0	0	33	67	67
Schilbeidae						
<i>Parailia pellucida</i>	17	50	83	67	83	100
<i>Schilbe intermedius</i>	50	67	67	83	83	67
<i>Schilbe mandibularis</i>	0	33	33	83	67	100
Claridae						
<i>Clarias anguillaris</i>	0	17	17	67	83	83
<i>Clarias buettikoferi</i> *	0	0	0	17	33	67
<i>Clarias ebriensis</i>	17	0	50	83	67	67
<i>Heterobranchus isopterus</i>	0	50	50	50	50	67
<i>Heterobranchus longifilis</i>	0	0	50	33	50	83
Synbranchiformes						
Mastacembelidae						
<i>Mastacembelus nigromarginatus</i>	67	33	50	50	17	33
Charaiformes						
Hepsetidae						
<i>Hepsetus odoe</i>	17	17	67	33	50	67
Alestidae						
<i>Brycinus imberi</i>	50	33	33	33	33	33
<i>Brycinus longipinnis</i>	100	100	0	100	100	100
<i>Brycinus macrolepidotus</i>	17	83	83	67	83	83
<i>Brycinus nurse</i>	50	33	33	17	17	17
<i>Micralestes elongatus</i>	33	50	50	17	0	0
<i>Micralestes occidentalis</i>	17	17	33	0	83	67
Osteoglossiformes						
Notopteridae						
<i>Papyrocranus afer</i>	50	50	17	50	17	17
Arapaimidae						
<i>Heterotis niloticus</i> **	33	0	33	50	83	100
Mormyridae						
<i>Brienomyrus brachyistius</i> *	0	0	0	33	50	83
<i>Marcusenius furcoidens</i>	83	83	83	67	67	67

Tabale 2 continued :

<i>Marcusenius senegalensis</i>	67	50	17	33	17	50
<i>Marcusenius sp.</i>	100	83	83	67	83	83
<i>Marcusenius ussheri</i>	83	67	83	33	33	33
<i>Mormyrops anguilloides</i>	50	67	33	33	33	33
<i>Mormyrus rume</i>	33	33	17	33	50	100
<i>Petrocephalus bovei</i>	67	50	67	50	33	33
<i>Pollimyrus isidori</i>	17	17	0	0	50	67
Mugiliformes						
Mugilidae						
<i>Liza falcipinnis</i> *	0	17	0	17	50	67
Elopiformes						
Elopidae						
<i>Elops lacerta</i> *	0	0	0	0	100	100
Clupeiformes						
Clueidae						
<i>Pellonula leonensis</i> *	67	67	17	50	83	67
Cypriniformes						
Cyprinidae						
<i>Barbus ablabes</i>	83	50	50	33	0	0
<i>Barbus trispilos</i>	67	67	67	33	0	0
<i>Barbus wurtzi</i>	0	17	17	67	50	67
<i>Labeo coubie</i>	33	67	67	50	50	83
<i>Labeo parvus</i>	0	33	17	17	83	100
<i>Raiamas senegalensis</i> *	33	0	0	17	50	100
Pleuronectiformes						
Paralichthyidae						
<i>Citharichthys stampflii</i> *	0	0	0	0	83	100

S1 to S6 = sampling sites; Values = fish species occurrences percentage at sites during study period ; * = species with estuarine/marine affinities ; ** = introduced species.

Fish population analyzed

Fish diversity varied with spatial gradients in Ehania River (Fig. 2A). The upstream, with 35 species, was less rich than the middle and downstream areas (46 and 68 respectively). Thirty three (33) species were very common and occurred in almost every sampling zone (Table 2). The upstream and downstream areas gathered 35 species. Moreover, 33 species were common to the upper and middle areas of Ehania

basin. Finally, 46 species were common to the lower courses and the middle area. The Mann-Whitney test revealed a significant difference ($p < 0.05$) between the species richness of the sampling sites (Fig. 2B). Sampling sites S5 and S6, which are located more downstream, have the highest species richness (Fig. 2B). The 21 species restricted to the downstream of the river are mainly estuarine/marine species (Table 2).

Along longitudinal gradient, beta diversity index recorded was 18 between the upstream and the middle area, and 19 between the middle area and the downstream. The highest beta diversity

value, which was observed between the lower and upper course (32), revealed low similarity between both those last sampling zones.

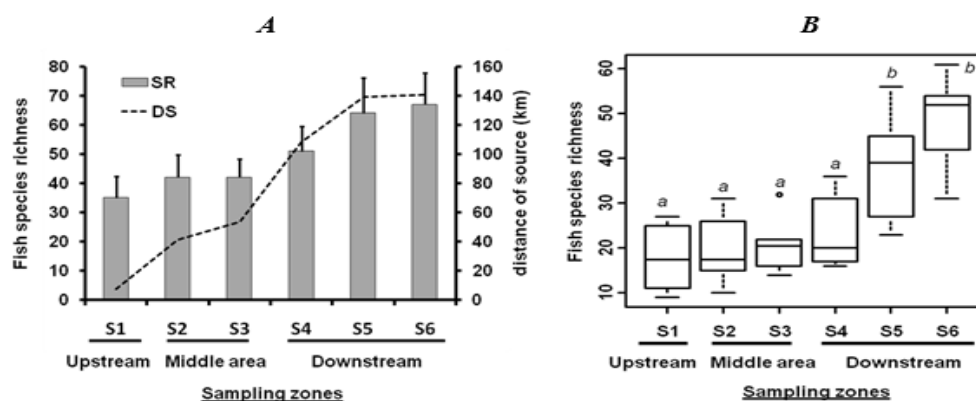


Figure 2: Variations of fish species richness in Ehania River along the longitudinal gradient. S1 to S6 = sampling sites; SR = fish species richness; DS = distance from source; vertical bars (A) represent the standard error. The different alphabets (B) indicate significant difference in the Mann-Whitney test ($p < 0.05$).

The Shannon's diversity index and equitability index varied across the river, respectively 1.30 (S3_08) to 5.54 (S6_04) and 0.34 (S3_08) to 0.94 (S6_02) (Figs. 3 and 4). Along the longitudinal gradient, the lowland area had the highest (Mann-Whitney test, $p < 0.05$) diversity index values (Figs. 3

and 4). As for the lowest values (Mann-Whitney test, $p < 0.05$), they were observed at station S3 in the middle part of the River. The temporal variation of diversity index is less marked than spatial variation (Fig. 4). Species richness, Shannon diversity and equitability index do not change significantly from one season to another.

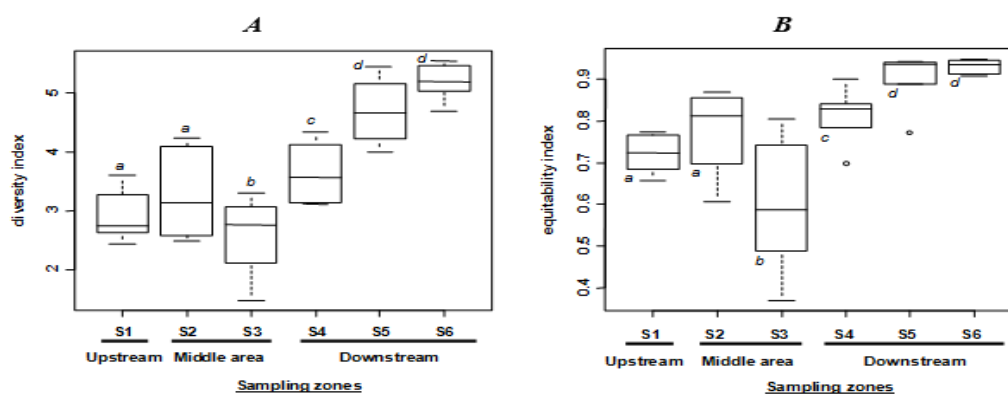


Figure 3: Variations of Shannon-Wiener diversity (A) and equitability (B) index in Ehania River along the longitudinal gradient. S1 to S6 = sampling sites. The different alphabets indicate significant difference in the Mann-Whitney test ($p < 0.05$).

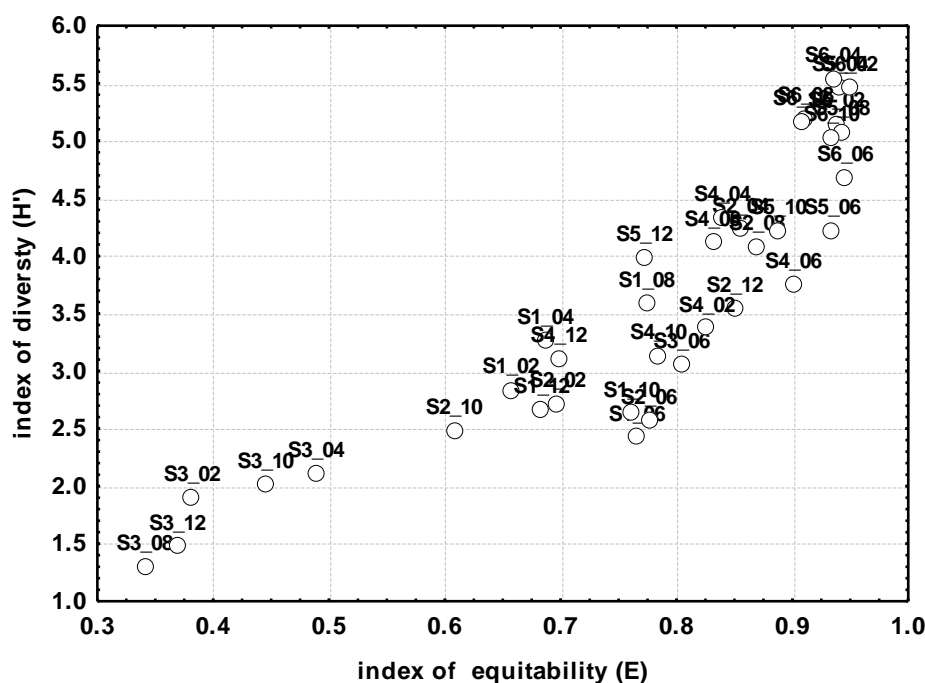


Figure 4: Spatial and temporal variations of fish diversity along the river basis on Shannon's diversity and equitability index. S1 to S6 = sampling sites; Numbers (_02, _04, _06, _08, _10, _12) = sampling months (from February 2010 to December 2010).

Discussion

Examination of the ichthyofauna of the river Ehania shows that Perciformes, Siluriformes, Osteoglossiformes, Characiformes and Cypriniformes are the orders containing the most families and species, as also observed by Teugels *et al.* (1988), Da Costa *et al.* (2000), Konan *et al.* (2006) and Froese and Pauly (2012) in some rivers of the same region. About families, five of them dominate by species number (i.e. Cichlidae, Mormyridae, Alestidae, Cyprinidae, Clariidae), as also mentioned by Da Costa *et al.* (2000) and Konan *et al.* (2006).

The number of species (48), reported by Konan *et al.* (2006) in the Ehania sub-basin, is inferior to those

listed in this study (70 species). The differences between these data were mainly related to the sampling procedure, the sampling periods and the types of habitats prospected. Indeed, during this study, we surveyed along the river (from upstream to downstream) through six sites during all four seasons (two dry seasons and two rainy seasons). In addition, sampling sites were chosen so as to explore the maximum habitat. This study increased the richness of the Tano Basin from 79 (Teugels *et al.*, 1988; Konan *et al.*, 2006; Niamien-Ebrottié *et al.*, 2008; Froese and Pauly, 2012) to 104 species.

Fish diversity varied with spatial gradients in Ehania River. Along the longitudinal gradient, total diversity

presented a peak in the lowland area, followed distantly by the middle zone. Indeed, the downstream (68 species) was richer in species compared to the middle and headwater areas (respectively 46 and 35), as also observed by Hugueny (1990), Tito de Morais and Lauzanne (1994), Da Costa *et al.* (2000), Koné *et al.* (2003), Konan *et al.* (2006) and Kouamé *et al.* (2008) in other tropical river systems. The reason generally seems to be related to the gradual raise in habitat heterogeneity and diversity (Vannote *et al.*, 1980; Quist and Guy, 2001; Fischer and Paukert, 2008). Petry and Schulz (2006) underlined that fish assemblages reflect structural and physicochemical changes from the upper to the lower reaches.

The beta diversity index calculated between the defined zones indicated significant differences in the species composition pattern among the lower and upper course. We observed biotic zonation with two distinct fish fauna zones: upper river fauna comprised of native fish species and lowland fauna dominated by species with estuarine/marine affinities. Such pattern clearly would denote a longitudinal gradient in fish assemblage distribution in Ehania River basin. The homogeneity in fish composition among up and middle stream stations may result from higher connectivity between stations, since they are contiguous and fish may swim more easily between them than between this upper zone and the lower course. In the river Ehania, dams have been built by fishermen between stations S4 and S5, in downstream, to trap fish.

Preventing migration of fish (estuarine/marine species example) above upstream, the dams have the effect of reducing the species diversity of fish fauna in the upper and middle areas of the river. Indeed in this study, we collected 27 estuarine/marine species at station S5 just after dams, against 9 estuarine/marine species collected by Konan *et al.* (2006) at stations S3 and S4 before dams in the same river. In addition, these barriers profoundly alter the spatiotemporal distribution and structure of fish in this river. It was also reported by Diouf *et al.* (1991), Pouyaud (1994), Lévêque and Paugy (1999), Quist and Rahel (2006), Konan *et al.* (2013), that dams impede estuarine/marine fish from migrating upstream during floods, which disturbs their life cycle, especially reproduction in favorable habitats. In the Bia River for example, Da Costa *et al.* (2000) observed that estuarine/marine species, previously observed in the upper course of the Bia River, were restricted to the lowland after the construction of two dams, which have been recognized as a major threat to aquatic fauna (Allan, 1995). The massive presence of estuarine/marine species (38% of species found in Ehania River) can be due to the use of additional food resources, hence optimizing the energy costs of reproduction. This can occur in the lagoon (Albaret and Legendre, 1985), freshwater systems (Bruslé, 1981), and sometimes in the sea (Pillay, 1965).

Among the 22 species reported for the first time in the Ehania River, two

introduced species appeared: *H. niloticus* and *O. niloticus*. The presence of this non-native species in Ehania River may be related to the many farm ponds established along this river. Attention should be paid to their spread in this River basin because, according to Rahel (2002), Sax *et al.* (2002), Schulze *et al.* (2006), Leprieur *et al.* (2006), Benejam *et al.* (2007), Trujillo-Jiménez *et al.* (2009) exotic species can have harmful impacts on native species.

Analysis of the diversity indices along Ehania River showed that the lowest values were observed at station S3 in the middle stream. According to Amanieu and Lasserre (1982), Zabi (1993) and Dajoz (2000), the low values of diversity indices characterize undiversified communities with a low degree of organization. The low level of organization of fish communities observed in the middle zone could be related to modes of occupation of the basin. Indeed, the middle part of Ehania River traverses an intense agricultural activity area with many plantations (palm tree, banana, pineapple, coffee, rubber and cocoa). The seasonal drainage flows associated with these agricultural activities constitute sources of pollution to aquatic ecosystems. In addition, many villages along this part of the river discharge their waste (solid and liquid) in the stream. This highly anthropogenic environment could impose a significant stress level on the fish fauna of this part of the river Ehania. Alterations to stream environments can take many forms, including changes in water quality, instream habitat, riparian

habitat, and the introduction of new species (Brown, 2000). Leveque and Paugy (1999), Karr and Chu (2000), Bozzetti and Schulz (2004), Rashleigh *et al.* (2009) argue that continental water systems are particularly affected by human activities taking place both in the aquatic environment and on the basin. According to Wootton (1992) and Fischer *et al.* (2010) the resulting living conditions might be unfavorable to some fish species. Moreover, according to Harmelin-Vivien (1992), Leveque (1995), Lemoalle (1999), Brown (2000), Quinn and Kwak (2003), Petry and Schulz (2006), fish populations respond quickly to disturbances of their environment that cause changes in species composition, staffing and trophic structure.

No seasonal significant differences were seen in fish community structure in any sampling site. Species richness, Shannon diversity and equitability index were not changed significantly from one season to another in some rivers in the same sub-region, as also observed by Da Costa *et al.* (2000), and Konan *et al.* (2006). In other tropical regions, Ostrand and Wilde (2002), Bozzetti and Schulz (2004), Flinders *et al.* (2009) suggested that the assemblage structure is determined more by average or persistent differences in environmental conditions among sites, than by seasonal variation in environmental conditions. As a result of this study of ichthyofauna diversity patterns along spatial gradients, we suggest the following:

- Adequate fishery activity management, taking into account the

non-random spatial structure and fish diversity along the longitudinal gradient;

- Maintenance of a monitoring program allowing the study of the fish diversity pattern dynamics of such small coastal rivers.

Acknowledgements

We are grateful to the Research Group directed by Prof. Theophile Gnagne for their valuable help and advice. This study was funded by the partnership between Water and Sanitation for Africa, National Representation of Ivory Coast and FEM/ONG.

References

- Albaret, J.J. and Legendre M., 1985.** Biologie et écologie des Mugilidae en lagune Ebrié (Côte d'Ivoire): Intérêt potentiel pour l'aquaculture lagunaire. *Revue d'Hydrobiologie Tropicale*, 18, 281-303.
- Allan, J.D., 1995.** Stream ecology. Kluwer Academic Publishers. Michigan, USA. 387P.
- Amanieu, M. and Lasserre, G., 1982.** Organisation et évolution des peuplements lagunaires. *Oceanologica Acta*, SP, 201-213.
- Barbour, M.T., Gerritsen, J., Snyder, B.D. and Stribling, J.B., 1999.** Rapid bioassessment protocols for use in streams and wadeable rivers: periphyton, benthic macroinvertebrates and fish. 2nd eds. EPA 841-B-99-002. Washington D.C., USA. 339P.
- Benejam, L., Carol, J., Benito, J. and García-Berthou, E., 2007.** On the spread of the European catfish (*Silurus glanis*) in the Iberian Peninsula: first record in the Llobregat river basin. *Limnetica*, 26(1), 169-171.
- Bonner, T.H. and Wilde, G.R., 2002.** Effects of turbidity on prey consumption by prairie stream fishes. *Transactions of the American Fisheries Society*, 131, 1203-1208.
- Bozzetti, M. and Schulz, U.H., 2004.** An index of biotic integrity based on fish assemblages for subtropical streams in southern Brazil. *Hydrobiologia*, 529, 133-144.
- Brown, L.R., 2000.** Fish communities and their associations with Environmental variables, lower San Joaquin River Drainage, California. *Environmental Biology of Fishes*, 57(3), 251-269.
- Bruslé, J., 1981.** Sexuality and biology of reproduction in grey mullets.. In: Aquaculture of grey mullets, Oren, O. H. (ed.), Cambridge Univ. Press, New York. pp. 99-154
- Da Costa, K.S., Gourène, G., Tito De Morais, L. and Van Den Audenaerde, D.F.E.T., 2000.** Caractérisation des peuplements ichtyologiques de deux fleuves côtiers ouest-africains soumis à des aménagements hydroagricoles et hydroélectriques. *Vie Milieu*, 50, 65-77.
- Daget, J. and Iltis, A., 1965.** Poissons de Côte d'Ivoire (eaux douces et saumâtres). Edition IFAN, Dakar. 385P.
- Dajoz, R., 2000.** Précis d'Ecologie. 7^{ème} édition, Dunod, Paris, 615P.

- Diouf, P.S., Kebe, M., Le Reste, L., Bouso, T., Diadhiou, H.D. and Gaye, A.B., 1991.** Plan d'action forestier. Pêche et aquaculture continentales. CRODT, FAO, ministère du développement et de l'hydraulique, Vol. I. 268P.
- Ebrahimi, M. and Taherianfard, M., 2011.** The effects of heavy metals exposure on reproductive systems of cyprinid fish from Kor River. *Iranian Journal of Fisheries Sciences*, 10(1), 13-24.
- Fischer, J.R. and Paukert, C.P., 2008.** Habitat relationships with fish assemblages in minimally disturbed Great Plains regions. *Ecology of Freshwater Fish*, 17, 597-609.
- Fischer, J.R., Quist, M.C., Wigen, S.L., Schaefer, A.J., Stewart, T.W. and Isenhardt, T.M., 2010.** Assemblage and population-level responses of stream fish to riparian buffers at multiple Spatial Scales. *Transactions of the American Fisheries Society*, 139, 185-200.
- Flinders, C.A., Horwitz, R.J. and Belton, T., 2008.** Relationship of fish and macroinvertebrate communities in the mid-Atlantic uplands: Implications for integrated assessments. *Ecological Indicators*, 8, 588-598.
- Flinders, C.A., Ragsdale, R.L. and Hall, T.J., 2009.** Patterns of fish community structure in a long-term watershed-scale study to address the aquatic ecosystem affects of pulp and paper mill discharges in four US receiving streams. *Integrated Environmental Assessment and Management*, 5(2), 219-233.
- Froese, R. and Pauly, D., (eds.) 2012.** FishBase. World Wide Web electronic publication. www.fishbase.org, version(04/201).
- Hammer, O., Harper, D.A.T. and Ryan, P.D., 2001.** Paleontological statistics software package for education and data analysis. *Paleontologica Electronica*, 4(1), 1-9.
- Harmelin-Vivien, M., 1992.** Impacts des activités humaines sur les peuplements ichtyologiques des récifs coralliens de Polynésie française. *Cybiurn*, 16(4), 279 - 289.
- Harrison, S., Ross, S.J. and Lawton, J.H., 1992.** Beta diversity on geographic gradients in Britain. *Journal of Animal Ecology*, 61, 151-158.
- Hugueny, B., 1990.** Richesse des peuplements de poissons dans le Niandan (haut Niger, Afrique) en fonction de la taille de la rivière et de la diversité du milieu. *Revue d'Hydrobiologie Tropicale*, 23, 351 - 364.
- Hugueny, B. and Lévêque, C., 1994.** Freshwater fish zoogeography in west Africa: faunal similarities between rivers basins. *Environmental Biology of Fishes*, 39, 365-380.
- Ibanez, C., Oberdorff, T., Teugels, G., Mamononekene, V., Lavoué, S., Fermon, Y., Paugy, D. and Toham, A.K., 2007.** Fish assemblages structure and function along environmental gradients in

- rivers of Gabon (Africa). *Ecology of Freshwater Fish*, 16, 315-334.
- Jackson, D.A., Peres-Neto, P.R. and Olden, J.D. 2001.** What controls who is where in freshwater fish communities – the roles of biotic, abiotic, and spatial factors. *Canadian Journal of Fisheries and Aquatic Sciences*, 58, 157-170.
- Karr, J. R., 1981.** Assessment of biotic integrity using fish communities. *Fisheries*, 6, 21-27.
- Karr, J.R. and Chu, W.E., 2000.** Sustaining living rivers. *Hydrobiologia*, 422/423, 1-14.
- Konan, K.F., 2008.** Composition, Structure et déterminisme de la diversité ichthyologique des rivières côtières du Sud-Est de la Côte d'Ivoire (Soumié-Eholié-Ehania-Noé). PhD thesis in Science and Environmental Management, University of Abobo-Adjamé (Côte d'Ivoire), 268P.
- Konan, F.K., Leprieur, F., Ouattara, A., Brosse, S., Grenouillet, G., Gourène, G., Winterton, P. and Lek, S., 2006.** Spatio-temporal patterns of fish assemblages in coastal West African rivers: a self-organizing map approach. *Aquatic Living Resources*, 19, 361-370.
- Konan, F.K., Edia, E.O., Bony, Y.K., Ouattara, A. and Gourène, G., 2013.** Fish assemblages in the Bia river-lake system (south-eastern of Ivory Coast): A self-organizing map approach. *Livestock Research for Rural Development*, 25(1), 43-51.
- Koné, T., Teugels, G.G., N'Douba, V., Kouamelan, E.P. and Gooré Bi, G., 2003.** Fish assemblages in relation to environmental gradients along a small west African coastal basin, the San Pedro River, Ivoir Coast. *African Journal of Aquatic Science*, 28(2), 163-168.
- Kouamé, K.A., Yao, S.S., Gooré Bi, G., Kouamélan, E.P., N'Douba, V. and Kouassi, N.J., 2008.** Influential environmental gradients and patterns of fish assemblages in a West African basin. *Hydrobiologia*, 603, 159-169.
- Kutka F.J. and Richards C. 1996.** Relating diatom assemblage structure to stream habitat quality. *Journal of the North American Benthological Society*, 15, 469-480.
- Lemoalle, J., 1999.** La diversité des milieux aquatiques. In: Les poissons des eaux continentales africaines. Diversité, écologie, utilisation par l'homme, Lévêque, C. and Paugy, D. (eds.) Edition IRD, Paris. pp. 11-30.
- Leprieur, F., Hickey, M., Arbuckle, C.J., Closs, P.G., Brosse S. and Townsend, C.R., 2006.** Hydrological disturbance benefits a native fish at the expense of an exotic fish in a New Zealand stream. *Journal of Applied Ecology*, 43, 930-939.
- Lévêque, C., 1995.** L'habitat: être au bon endroit au bon moment? *Bulletin Français de Pêche et de Pisciculture*, pp. 337-339, 9-20.
- Lévêque, C. and Paugy D., 1999.** Impacts des activités humaines. In: Lévêque C., Paugy D. (eds.) Les poissons des eaux continentales

- africaines, Diversité, Ecologie, Utilisation par l'homme. Edition IRD, Paris. pp. 365-383.
- Marchetti, M.P. and Moyle, P.B., 2001.** Effects of flow regime on fish assemblages in a regulated California stream. *Ecological Applications*, 11, 530-539.
- Moyle, P.B., 1994.** Biodiversity, biomonitoring, and the structure of stream fish communities. *In: Biological monitoring of aquatic systems*, Loeb, S. L. and Spacie, A. (eds.), Lewis Publishers, Boca Raton, pp. 171-186.
- Nerbonne, B.A. and Vondracek, B., 2001.** Effects of local land use on physical habitat, benthic macroinvertebrates and fish in the Whitewater River, Minnesota, USA. *Environmental Management*, 28, 87-99.
- Niamien-Ebrottié, E.J., Konan, K.F., Gnagne, T., Ouattara, A., Ouattara, M. and Gourène, G., 2008.** Etude diagnostique de l'état de pollution du système fluvio-lagunaire Aby - Bia - Tanoé (Sud-Est, Côte d'Ivoire). *Sud Sciences & Technologies*, 16, 5-13.
- Ostrand, K.G. and Wilde, G.R., 2002.** Seasonal and spatial variation in a prairie stream-fish assemblage. *Ecology of Freshwater Fish*, 11, 137-149.
- Paugy, D., Traoré, K. and Diouf, P.S., 1994.** Faune ichtyologique des eaux douces de l'Afrique de l'Ouest. *In: Diversité biologique des poissons des eaux douces et saumâtres d'Afrique*, Teugels, G. G., Guegan, J. F. and Albaret, J. J. (eds.), MRAC-Tervuren-Belgique. *Ann Sciences Zoology*, 275, 35-47.
- Paugy, D., Lévêque, C. and Teugels, G.G., 2003.** Poissons d'eaux douces et saumâtres de l'Afrique de l'Ouest, édition complète. Tome I & II. Edition IRD-MNHN-MRAC, Paris-Tervuren. 457 + 815P.
- Petry, A.C. and Schulz U.H., 2006.** Longitudinal changes and indicator species of the fish fauna in the subtropical Sinos River, Brazil. *Journal of Fish Biology*, 69, 272-290.
- Pielou, E.C., 1969.** An introduction to mathematical ecology. Wiley Intersci., New York, 285P.
- Pillay, T.V.R., 1965.** Report to the Government of Nigeria on investigations of the possibility of brackish water fish culture in the Niger Delta. FOA/UN Rep. FAO/EPTA.
- Pouyaud, L., 1994.** Génétique des populations de tilapias d'intérêt aquacole en Afrique de l'Ouest. Relations phylogénétiques et structurations populationnelles. Thèse de Doctorat ès sciences, Montpellier, Université de Montpellier (France), 229P.
- Quinn, J.W. and Kwak, T.J., 2003.** Fish assemblage changes in an Ozark River after impoundment: A long-term perspective. *Transactions of the American Fisheries Society*, 132, 110-119.
- Quist, M.C. and Guy, C.S., 2001.** Growth and mortality of prairie stream fishes and relations with

- instream habitat. *Ecology of Freshwater Fish*, 10, 88-96.
- Quist, M.C., Fay, P.A., Guy, C.S., Knapp, A.K. and Rubenstein, B.N., 2003.** Military training effects on terrestrial and aquatic communities on a grassland military installation. *Journal of Applied Ecology*, 13, 432-442.
- Quist, M.C. and Rahel, F.J., 2006.** Spatial patterns of fish assemblage structure in a tributary system of upper Colorado River basin. *Journal of Freshwater Ecology*, 21(4), 673-680.
- Rabeni, C.F. and Smale, M.A., 1995.** Effects of siltation on stream fishes and the potential mitigating role of the buffering riparian zone. *Hydrobiologia*, 303, 211-219.
- Rahel, F.J., 2002.** Homogenization of freshwater faunas. *Annual Review of Ecology and Systematics*, 33, 291-315.
- Rashleigh, B., Hardwick, D. and Roux, D., 2009.** Fish assemblage patterns as a tool to aid conservation in the Olifants River catchment (East), South Africa. *Water Safety*, 35(4), 517-524.
- Reyjol, Y., Fischer, P., Lek, S., Rösch, R. and Eckmann, R., 2005.** Studying the spatiotemporal variation of the littoral fish community in a large prealpine lake, using self-organizing map. *Canadian Journal of Fisheries and Aquatic Sciences*, 62, 2294-2302.
- Sax, D.F., Gaines, S.D. and Brown, J.H., 2002.** Species invasions exceed extinctions on islands worldwide: A comparative study of plants and birds. *American Naturalist*, 160, 766-783.
- Schulze, T., Baade, U., Dörner, H., Eckmann, R., Haertel-Borer, S. S., Hölker, F. and Mehner, T., 2006.** Response of the residential piscivorous fish community to introduction of a new predator type in a mesotrophic lake. *Canadian Journal of Fisheries and Aquatic Sciences*, 63(10), 2202-2212.
- Shannon, C.E. and Weaver, W., 1963.** The mathematical theory of communication. Urbana University Press, Illinois, 127P.
- Simon, T.P., 2000.** The use of biocriteria as a tool for water resource management. *Environmental Science & Policy*, 3, 43-49.
- Tejerina-Garro, F.L., Maldonado, M., Ibanez, C., Pont, D., Roset, N. and Oberdorff, T., 2005.** Effects of natural and anthropogenic environmental changes on riverine fish assemblages: a framework for ecological assessment of rivers. *Brazilian Archives of Biology and Technology*, 48, 91-108.
- Teugels, G.G., Lévêque, C., Paugy, D. and Traoré, K., 1988.** Etat des connaissances sur la faune ichtyologique des bassins côtiers de la Côte d'Ivoire et de l'ouest du Ghana. *Revue d'Hydrobiologie Tropicale*, 21, 221-237.
- Tito de Moraes, L. and Lauzanne, L., 1994.** Zonation longitudinale des peuplements ichtyologiques avant la mise en eau de la retenue de Petit-

- Saut (Guyane française). *Revue d'Hydrobiologie Tropicale*, 27(4), 467-483.
- Trujillo-Jiménez, P., Lòpez-Lòpez, E., Diàz-Pardo, E. and Camargo, J. A., 2009.** Patterns in the distribution of fish assemblages in Rìo Amacuzac, Mexico: influence of abiotic factors and biotic factors. *Reviews in Fish Biology and Fisheries*, 20(40), 457-469.
- Vannote, R.L., Minshall, G.W., Cummins, K.W., Sedel, J.R. and Cushing, C.E., 1980.** The river continuum concept. *Canadian Journal of Fisheries and Aquatic Sciences*, 37(1), 130-137.
- Wilson, M.V. and Shmida, A., 1984.** Measuring beta diversity with presence-absence data. *Journal of Ecology*, 72, 1055-1064.
- Wootton, R.J., 1992.** Fish ecology, Tertiary level biology. Chapman & Hall Edition, London. 205P.
- Wright, K.K. and Li, J.L., 2002.** From continua to patches: examining stream community structure over large environmental gradients. *Canadian Journal of Fisheries and Aquatic Sciences*, 59, 1404-1417.
- Yapi-Gnaoré, C.V., Da Costa, K.S., Kouassi, N.C. and Dembelé, I., 2000.** Opportunities and strategies for conservation of fish genetic resources in Côte d'Ivoire. *In: Biodiversity and sustainable use of fish in the coastal zone*, Abban, E. K., Casal, C. M. V., Falk, T. M. and Pullin, R. S. V. (Eds.), *ICLARM Conference Proceedings*, 63, 28-31.
- Zabi, S.G., 1993.** Organisation des peuplements macrofaunes benthiques. *Agronomie Africaine*, 5(1), 39 - 52.