

## A Comparative study of synthetic carp GnRH and carp pituitary homogenate effects on in vitro steroidogenesis of oocytes in common carp (*Cyprinus carpio*)

Salamat N.<sup>1\*</sup>; Erfani Majd N.<sup>2</sup>; Hashemitabar H.<sup>3</sup>; Mesbah M.<sup>4</sup>; AhangarPour A.<sup>5</sup>

Received: January 2011 Accepted: June 2011

### Abstract

Vitellogenic stage carp ovaries were collected aseptically and the cells of ovarian follicles were dispersed by trypsin treatment and cultivated as monolayer. Control cultures were grown in medium M199 alone. Media for experimental cultures were supplemented either with 100  $\mu\text{l ml}^{-1}$  of CPH and CPS-carp GnRH (cultivated pituitary cell secretion affected by  $10^{-6}$ ,  $10^{-8}$ ,  $10^{-10}$  M carp GnRH). The direct effect of these factors on 17- $\alpha$ -Hydroxy progesterone (17 $\alpha$  -OHP) and 17 $\beta$ -Estradiol (E<sub>2</sub>) secretion of isolated follicular cells in cell culture was assayed by appropriate Radioimmunoassay (RIA). According to the results the E<sub>2</sub> was a main hormone secreted by cultivated carp granulosa and theca cells. Adding 100  $\mu\text{l ml}^{-1}$  of  $10^{-6}$  M CPS-carp GnRH had no significant effect on cultivated granulosa and theca cells endocrine activity ( $P > 0.05$ ). On the other hand, carp granulosa and theca cells treated with the lower contents of CPS-carp GnRH ( $10^{-8}$ ,  $10^{-10}$  M) showed a 4.02 and 3.74-fold increase in E<sub>2</sub> concentration and 4.27 and 3.64-fold increase in 17 $\alpha$  -OHP level, which was significantly higher than CPH ( $P < 0.05$ ). Also, there was a significant increase of steroid secretion in group stimulated with 100  $\mu\text{l ml}^{-1}$  of CPS and CPH, but there were no significant differences between them ( $P > 0.05$ ).

**Keywords:** *Cyprinus carpio*, Cell culture, carp GnRH, Gonadotropin hormones, Steroid hormones

1- Department of Marine Biology, School of Marine Science, Khorramshahr Marine Science and Technology University, P.O. Box: 669, Khorramshahr, Iran.

2-Department of Histology, Faculty of Veterinary Medicine, Shahid Chamran University of Ahvaz, Iran.

3-Department of Anatomical Sciences, School of Medicine, Jondishapoor University of Medical Sciences, Ahvaz, Iran.

4- Department of Aquatic Animal Health and Diseases, Faculty of Veterinary Medicine, Shahid Chamran University of Ahvaz, Iran.

5- Department of Physiology, School of Medicine, Jondishapoor University of Medical Science, Ahvaz, Iran.

\*Corresponding author E-mail: salamatnegin@yahoo.com

## Introduction

It is well known that the reproductive process in teleosts, as in other vertebrates is mainly regulated by the endocrine system, the brain- pituitary- gonad (BPG) axis. Gonadotropin releasing hormone (GnRH) produced in the brain governs the release of gonadotropin from the pituitary and is one of the primary factors in BPG axis (Kumakura et al., 2004). Two types of gonadotropins (GtH-I, GtH-II) regulate gonadal activity such as gametogenesis and steroidogenesis (Nagahama, 2000). Many fish exhibit reproductive dysfunctions when reared in captivity. Most commonly, females fail to undergo final oocyte maturation (FOM), and thus ovulation and spawning (Peter et al., 1993). Manipulations of various environmental parameters such as temperature, photoperiod, salinity, etc can not always improve the reliability of spawning, and hormonal treatments are the only means of controlling reproduction reliably (Yaron, 1995; Zohar and Mylonas, 2001). Using pituitary homogenate was the first method of spawning induction. Pituitary homogenate contains two fish gonadotropin (GtH-I, GtH-II) and is known to be responsible for estradiol-17  $\beta$  production, stimulating in turn 17 $\alpha$ , 20 $\beta$  OH-P secretion (Tyler et al., 1991) which stimulated germinal vesicle break down (GVBD) in *Trichogaster* ovaries during reproductive season (Degani and Boker, 1992). On the other hand, the success of this method is quite variable (Weil et al., 1986). The other approach is the stimulation of spawning by a synthetic superactive analogue, to release the endogenous gonadotropine (GtH) from the

pituitary of treated fish (Zohar, 1989). To facilitate the GtH releasing activity of GnRH $\alpha$ , it is necessary to combine it with a dopamine receptor antagonist such as domperidone, pimozide or metoclopramide (Peter et al., 1988). Follicular cells around the oocyte are a good model for the investigation of hormonal events in the ovary. The objectives of the present experiment were to investigate the effects of carp GnRH $\alpha$  (synthetic carp GnRH) (containing domperidone) on cultivated pituitary cells secretion and sensitivity of ovarian follicular cells to these secretions compared to CPH (carp pituitary homogenate), expressed in terms of steroid secretion.

## Materials and methods

An experiment was conducted in Medical Cell Culture Research Center of Jondi Shapour Medical Science University in February 2008. All fishes were raised in the Shahid Maleki fish farm, Ahvaz, Iran. They were netted from the outdoor ponds and transferred to the flow-through basins containing 300 liter water at 18-20 ° C a month before the experiment.

## Reagents

Synthetic carp GnRH (carp GnRH $\alpha$  ethylamide combined with dopamine antagonist, domperidone, diluted in propylene glycol as a solvent) was supplied by Samen pharmacy; IRAN, M199 (Medium 199), MEM Eagle (Minimum Essential Medium Eagle with Non-essential amino acids, Earle's salts and Glutamin), Hepes, trypsin, collagenase

H, BSA (Bovine Serum Albumin), antibiotics (Penicillin and streptomycin) and antimycotic (Fungizone) were obtained from Sigma (Sigma-Aldrich; USA). The 96-well and 24-well microplates were from Nunc A/S; Denmark.

#### *Pituitary primary cell culture*

Pituitary primary cell culture was performed according to the method described by Weil et al. (1986) for trout and adapted by Mikolajczyk et al. (1990) for carp. At the day of experiment, five sexually mature male common carp ( $2 \pm 0.5$  kg, 2-3 years old) were euthanized with MS222 (200 ppm) and after taking off the roof of cranium and moving the brain and its surrounding fat, the pituitary glands were collected aseptically (under hood class II) and placed in sterile ice-cold MEM buffered with 15mM Hepes and 9mM bicarbonate (osmotic pressure of 275 mOsmol /kg and pH 7.7). The pituitary cells were dissociated by 1% collagenase H solution for 2-3 hr at 20° C. The cells were harvested by 10 min centrifugation (200 g) at 20° C and washed twice with pre-incubation medium containing FBS (2%) and antibiotic-antimycotic (1%) solution. The cells viability assessed by trypan blue exclusion test was 95%. They were re-suspended in incubation medium and transferred into a 96-well microplate (approximately  $5 \times 10^4$  cells / 250  $\mu$ l of medium / well). The plate was incubated for 72 hr at 22° C. Then the media called CPS (Cultivated pituitary cell secretion) were collected after centrifugation (200 g for 10 min) and frozen at -20° C until use. Thereafter the cells were washed twice

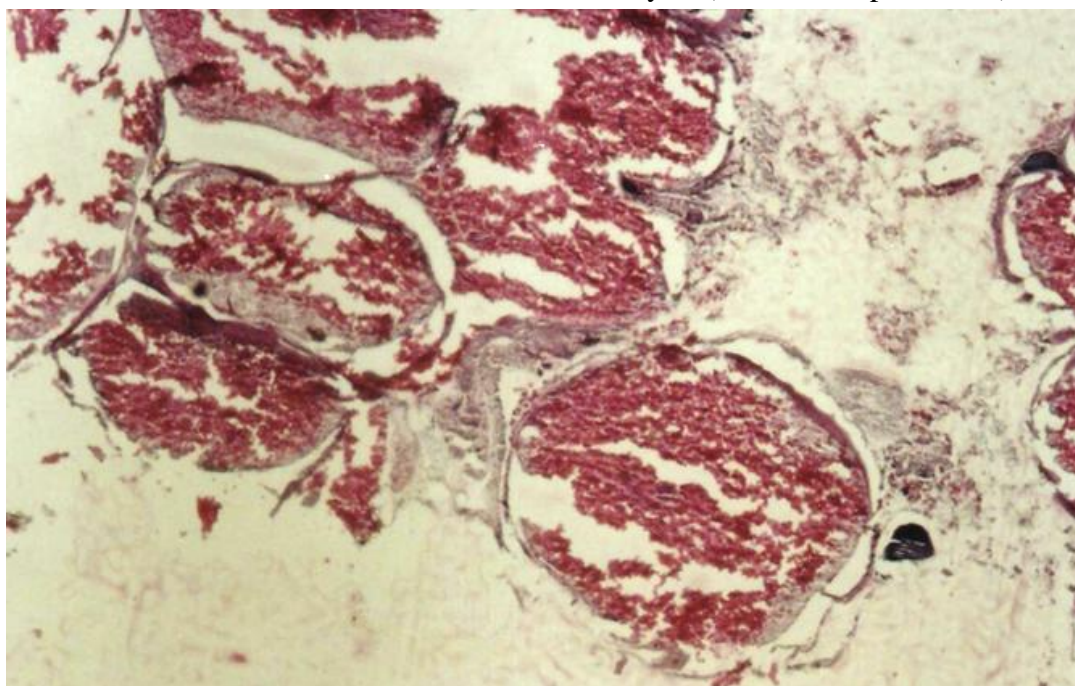
with 1 ml PBS/ well and the medium containing tested concentration of carp GnRH ( $10^{-10}$ ,  $10^{-8}$ ,  $10^{-6}$  M) was added. The wells containing control group received culture media alone. The cells were incubated for another 24 hr at 22° C. At the end of this period the media were collected and frozen at -20° C until use (Mikolajczyk et al., 1990).

#### *Isolation of follicular cells*

The procedure of ovarian follicular cells isolation followed the protocol used by Galas and Epler (2002). At the day of experiment, five 4-year old female common carp spawners ( $4.5 \pm 0.5$  kg in vitellogenic stage [the maturity stage of female carps was previously identified using histological methods [Fig. 1]]) were euthanized with MS222 (200 ppm) and ovaries were aseptically (using sterile dissection devices under hood class II) removed after abdomen dissection. Ovaries were placed in a beaker containing sterile phosphate buffered saline (PBS). The connective tissue capsule of the ovary was manually removed and the tissue was transferred into another beaker containing medium 199 diluted 4:1 with sterile distilled water. Ovarian pieces were separated from all interstitial tissues so that single oocytes remained. The medium was decanted and then replaced several times to rinse free oocytes thoroughly. Owing to such procedure, separate oocytes surrounded only by the follicular layer composed of granulosa (G) and theca cells (T) were obtained. Follicles free from connective tissue, were trypsinized by a 0.25% solution of trypsin in  $\text{Ca}^{2+}$  and  $\text{Mg}^{2+}$  free PBS for 30 min and three

changes of solution at 10-min intervals at 37°C. Trypsin action was inhibited by the addition of FBS (fatal bovine serum). Supernatant fractions, containing released cells were pooled, centrifuged and the pellet was re-suspended in the medium 199 and diluted to a concentration of  $2 \times 10^6$  cell / ml culture media. The viability of cells was checked by the trypan blue exclusion test and the cells proved to be 90% viable. Cells were grown as monolayers in a 24-well microplate in medium 199 supplemented with 10% FBS

and penicillin ( $120 \text{ IU ml}^{-1}$ ) and streptomycin ( $0.1 \text{ ng ml}^{-1}$ ) ( $\text{pH} = 7.4$ ) ( $2 \times 10^6$  cell / 1 ml culture media /well) at 20°C and 5%  $\text{CO}_2$  for 72 hr. The culture media were collected and replaced (after washing) with the medium containing  $100 \mu\text{l ml}^{-1}$  of CPH, CPS and CPS-carp GnRH ( $10^{-10}$ ,  $10^{-8}$ ,  $10^{-6}$  M). The wells containing the control group received culture media alone. The plates were incubated for 24 hr at 20°C and then the media were collected and frozen at  $-20^\circ \text{C}$  for further steroid analysis (Galas and Epler, 2002).



**Figure 1:** Common carp ovarian follicles in late vitellogenic stage (Hematoxylin & Eosin;  $\times 20$ )

#### *Steroid analysis*

17- $\alpha$ -Hydroxy progesterone (17 $\alpha$ -OHP) and 17- $\beta$ -Oestradiol ( $\text{E}_2$ ) were analyzed by radioimmunoassay described by Stoklosowa et al. (1982) in the Department of Physiology of Jondi Shapour Medical Science University, Ahvaz. The concentrations of steroids were computed in  $\text{pg ml}^{-1}$  of culture medium and were expressed as means  $\pm$  SE.

17 $\beta$ -estradiol was determined using [2, 4, 6, 7- $^3\text{H}$ ] Estradiol (sp. Act.  $100\text{Ci/mmol}$ : Immunotech, Beckman culture company, France) as a tracer and an antiserum raised in humans against oestradiol-17 $\beta$ -sodium azide, which was highly specific for oestradiol. Extremely low cross reactivity was obtained against other steroids (estrone, estriol, cortisol,

cholesterol, progesterone, androsterone...) (under 0.01%). In a series of 15 experiments the coefficients of variations between and within assays were 11.2 and 12.1%, respectively. The limit of the standard curve was between 6-5000 pg ml<sup>-1</sup>. 17 $\alpha$ -OHP was estimated using 17- $\alpha$ -hydroxy progesterone (sp. Act. 100Ci/mmol: Immunotech, Beckman culture company, France) as a tracer and an antibody raised in humans against 17 $\alpha$ -hydroxy progesterone- sodium azide-BSA (bovine serum albumin). The limit of the standard curve was between 46-50000 pg ml<sup>-1</sup>. Cross reactions for other steroids (hydroxylpregnenolone, progesterone, androsterone...) were under 1.3%. In a series of 15 experiments the coefficients of variations between and within assays were estimated to be 15.7 and 7.2%, respectively (Stoklosowa et al., 1982).

#### *Statistical method*

There were 6 groups all together: 1. The control group, 2. The group with CPH, 3. The group with CPS, 4. The group with CPS + carp GnRH 10<sup>-10</sup> M, 5. The group with CPS + carp GnRH 10<sup>-8</sup> M, 6. The group with CPS + carp GnRH 10<sup>-6</sup> M. Two steroid hormones (17 $\alpha$ -OHP and E<sub>2</sub>) were measured in all groups. The normality of the data was determined using a test of normality (shapiro wilk) and then data were analyzed by a one way analysis of variance (ANOVA) and the significance of the differences between the means was determined using an LSD test.

## **Results**

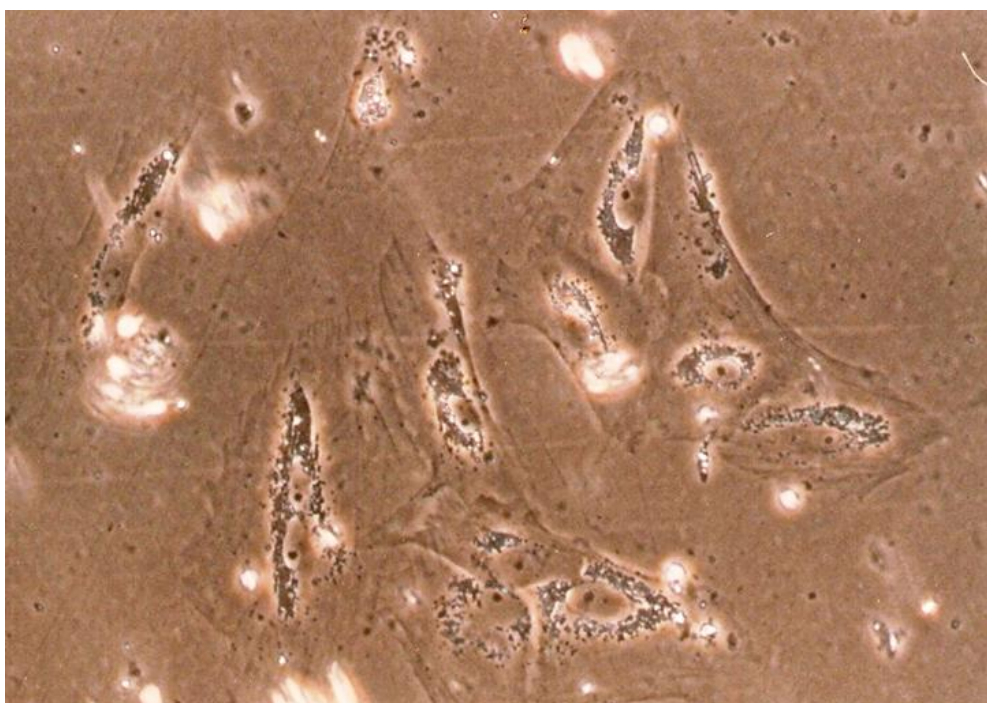
In order to perform ovarian follicular cell culture, the large follicles (1- 1.5 mm in diameter) with vitelogenic central oocyte and two surrounding layers, granulosa (G) and theca (T) cells, were selected. During trypsinization, follicular theca and granulosa layer easily detached from the follicles and relatively few follicles were damaged during enzyme treatment, therefore the contamination of cell suspensions with yolk was negligible. The cells were attached to the bottom of culture vessels after 24 hr of plating and the majority of cells had fibroblast - like shape (Fig. 2). The cells were proliferated and quickly became confluent. Cultures reached almost 100% confluences after 3 days (Fig. 2).

Results showed that the E<sub>2</sub> and 17 $\alpha$ -OHP secretion of ovarian follicular cells were 350.8  $\pm$  6.208 and 41.720  $\pm$  3.622 pg ml<sup>-1</sup> in the control group, respectively (Fig. 3). Adding 100  $\mu$ l ml<sup>-1</sup> of CPH increased E<sub>2</sub> and 17 $\alpha$ -OHP secretion of ovarian follicular cells significantly in comparison with the control group (976.2 $\pm$  9.645 and 92.1742  $\pm$  4.915 pg ml<sup>-1</sup>, respectively) (P<0.05, Fig. 3). In the cultivated granulosa and theca cells treated by 100  $\mu$ l ml<sup>-1</sup> of CPS, the E<sub>2</sub> and 17 $\alpha$ -OHP concentrations were 1005  $\pm$  58 and 88.875  $\pm$  8.3 pg ml<sup>-1</sup> respectively, which didn't cause any significant difference compared to the CPH treated group (P>0.05, Fig. 3).





**Figure 2:** The second day culture. The fibroblast- like cells were attached to the bottom of culture vessels after 24 hr of plating ( $\times 20$ )



**Figure 3:** The third day culture. The fibroblast- like cells proliferated and reached almost 100% confluences after 72 hr of plating ( $\times 40$ )

The addition of  $10^{-6}$  M CPS-carp GnRH (CPS treated with  $10^{-6}$  M carp GnRH) had no effect on endocrine activity of cultivated granulosa and theca cells ( $P>0.05$ , Fig. 3). On the other hand, the lower contents of carp GnRH ( $10^{-8}$ ,  $10^{-10}$  M) caused the significant increase of  $E_2$

and  $17\alpha$ -OHP levels in comparison with the other groups ( $1413 \pm 24.392$  and  $178.44 \pm 6.271$  pg ml $^{-1}$ ,  $1312.6 \pm 44.136$  and  $152 \pm 11.903$  pg ml $^{-1}$ , respectively) ( $P<0.05$ , Fig. 3), but had no significant difference with each other ( $P>0.05$ , Fig. 3).

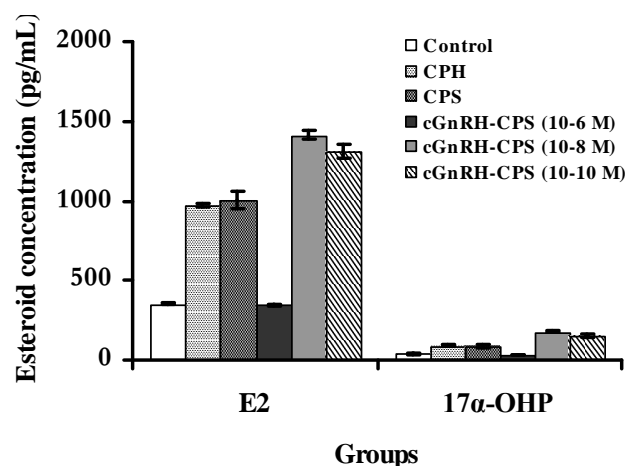


Figure 4: Concentrations of  $E_2$  and  $17\alpha$ -OHP in the follicular cells culture medium as mean  $\pm$  SE.

## Discussion

The present study allows the investigation of secretory potency of isolated components of the ovary apart from the complexity of the organ. On the basis of the studies which showed that cultivated ovarian follicular cells secreted steroid hormones (Nagler and Idler, 1992; Mugnier et al., 1997; Galas et al., 1999) in vitro steroid secretion by isolated carp ovarian follicular cell was studied.

In the present study  $E_2$  was a dominant hormone secreted by carp ovarian follicular cells to the culture medium. This high level of  $E_2$  was probably connected with ovulation. Also Galas et al., (1999) showed  $E_2$  secretion by carp follicular cells was especially

significant in February, May, September and December, which closely related with the spawning and vitellogenesis periods. As about  $17\alpha$ -OHP, an important metabolite in steroidogenesis, its maximum often occurred in April and May, which might be related to its intense conversion to  $17\alpha$ ,  $20\beta$ OH-P essential for final oocyte maturation (Venkatesh et al., 1992). The necessity of using an inducing agent such as CPH, HCG and GnRH $\alpha$  for spawning induction has been demonstrated in cyprinid fish such as common carp (Peter et al., 1988). Results showed 2.7-fold increase in  $E_2$  and 2.2-fold increase of  $17\alpha$ -OHP secreted from follicular cells treated by Carp pituitary homogenate

(CPH). The results obtained previously by Galas et al., (1999) are in agreement with this reported in the present work. The crude carp pituitary contains both gonadotropins GtH-I and GtH-II (Quesnel and Breton, 1995) and is extensively used for inducing spawning in fish hatcheries especially in developing countries. On the other hand, use of ground pituitaries is associated with various drawbacks, the most important ones being (a) expensive, (b) not always readily available, (c) having unpredictable activity (Drori et al., 1994). Furthermore, there is a possibility of diseases transmission from the donor fish to recipient broodstocks (Zohar and Mylonas, 2001).

The higher steroid secretion rate was seen in cultivated carp follicular cells which received CPS-carp GnRH compared to CPH treated cells. This result was in accordance with that obtained by Behl (2006) who reported that the increased level of steroidal secretion can be taken to be an indicator of enhanced steroidogenesis in carp follicular cells treated with GnRH- pituitary homogenate in vitro.

However, as it seems, carp GnRH in the highest concentration ( $10^{-6}$  M) blocked the gonadotropine secretion from cultivated pituitary cells, because adding  $100 \mu\text{l ml}^{-1}$  of  $10^{-6}$  M CPS-carp GnRH had no significant effect on cultivated granulosa and theca cells endocrine activity. It may be caused by down-regulation of GnRH hormone receptors on the pituitary cells (Ostrander, 2000). When

a hormone or neurotransmitter is present in excess (as the high concentration of carp GnRHa, which we used in this experiment) the number of active receptors generally decreases (down- regulation), whereas in the presence of a deficiency of the chemical messenger, the number of active receptors is increased (up-regulation) (Ganong, 1997). According to our results, carp granulosa and theca cells treated with the lower contents of CPS-carp GnRH ( $10^{-8}$ ,  $10^{-10}$  M) showed a 4.02 and 3.74-fold increase in  $E_2$  concentration and 4.27 and 3.64-fold increase in  $17\alpha\text{-OHP}$  level, which was significantly higher than CPH. Dorafshan et al. (2003) reported the higher spawning rate in fish receiving GnRHa + domperidone compared to CPE. Also, Szabo et al. (2002) pointed out that using GnRHa + domperidone in order to induce ovulation in nase (*Chondrostoma nasus*) resulted in a higher fertilization rate as compared to pituitary injected fish.

Using GnRH agonists for hormone therapies, repairs the endocrine disruption that results in the failure of captive fish to undergo FOM, ovulation and spawning, by inducing the release of endogenous LH (Sherwood et al., 1994; Zohar and Mylonas, 2001). On the other hand, to facilitate the GtH releasing activity of GnRHa, it is necessary to combine it with a dopamine receptor antagonist such as domperidone (Peter et al., 1988) which is known as the Linpe method.

In summary, this study demonstrated that the culture of ovarian follicular cells with new Iranian made



GnRHa (carp GnRH) containing domperidone resulted in a more pronounced effect on in vitro ovarian steroidogenesis and it could be a reliable procedure for in vivo induction of ovulation and spawning. However it is necessary to conduct more research to examine the effects of carp GnRH on spawning rate, latency period, working fecundity and embryo viability.

## References

- Degani, G. and Boker, R., 1992.** Sensitivity to maturation – inducing steroids and gonadotropin in the oocytes of blue gourami *Trichogaster trichopterus*. *General and Comparative Endocrinology*, **85(3)**, 430-439.
- Dorafshan, S., Mostafavi, H. and Amiri, B. M., 2003.** Induction of spawning in common carp (*Cyprinus Carpio*) using pituitary extract and GnRH analogue in combination with Domperidone. *Iranian Journal of Biotechnology*, **1**, 213-217.
- Drori, S., Ofir, M., Sivan, B. and Yaron, Z., 1994.** Spawning induction in common carp by pituitary extract or GnRH superactive analog combined with metoclopramide. *Aquaculture*, **119**, 393-404.
- Galas, J., Epler, P. and Stoklosowa, S., 1999.** Seasonal response of carp (*Cyprinus Carpio*) ovarian cells to stimulation by various hormones as measured by steroid secretion. *Endocrine Regulations*, **33**, 125-132.
- Ganong, W. F., 1997.** Review of medical physiology. Appleton & Lange, Norwalk, Connecticut, PP, 810-813.
- Kumakura, N., Okuzawa, K., Gen, K., Yamaguchi, S., Lim, B. S. and Kagawa, H., 2004.** Effects of gonadotropin- releasing hormone on pituitary- ovarian axis of one- year old pre- pubertal red seabream. *General and Comparative Endocrinology*, **138**, 105-112.
- Mugnier, CH., Gaignon, J. L. and Fostier, A., 1997.** in vitro synthesis of 17 $\alpha$ ,20 $\beta$ ,21-trihydroxy-4-pregnen-3-one by ovaries of turbot during oocyte maturation. *General and Comparative Endocrinology*, **107**, 63-73.
- Nagahama, Y., 2000.** Gonadal steroid hormones: major regulators of gonadal sex differentiation and gametogenesis in fish. In: Norberg, B., Kjesbu, O.S., Taranger, G.L., Andersson, E., Stefansson, S.O. (Eds.), Proceeding of the 6<sup>th</sup> International Symposium on Reproductive Physiology of Fish. Bergen. PP, 211-222.
- Nagler, J.J. and Idler, D.R., 1992.** In vitro ovarian estradiol-17 $\beta$  and testosterone responses to pituitary extract and corresponding serum levels during the prespawning to vitellogenic phases of the reproductive cycle in winter flounder *Pseudopleuronectes americanus*. *Comparative Biochemistry and Physiology*, **101A**, 69-75.

- Ostrander, G.K., 2000.** The fish laboratory. Academic press, USA, PP, 195-196.
- Peter, R.E., Lin, H.R. and Vanderkraak, G., 1988.** Induced ovulation and spawning of cultured freshwater fish in china: advances on application of GnRH analogue and dopamine antagonists, *Aquaculture*, **74**, 1-10.
- Peter, R.E., Lin, H.R., Vander Kraak, G. and Little, M., 1993.** Releasing Hormones, Dopamine Antagonists and Induced Spawning. In: Muir, J.F., Roberts, R.J., (Eds.), Recent Advances in Aquaculture. Blackwell Scientific, Oxford. PP, 25–30.
- Quesnel, H. and Breton, B., 1995.** In vitro modulation by steroids and growth hormone of the specific binding of gonadotropin II in rainbow trout follicular layers. *Comparative Biotechnology Physiology*. **111**, 197-203.
- Sherwood, N. M., Parker, D. B., McRoy, J. E. and Lescheid, D. W., 1994.** Molecular evolution of growth hormone-releasing hormone and gonadotropin-releasing hormone. In: Sherwood, N.M., Hew, C.L., (Eds.), Fish Physiology. Vol. XIII: Molecular Endocrinology of Fish. Academic Press, New York. PP, 3-66.
- Stoklosowa, S., Gregoraszcuk, E. and Channing, E. P., 1982.** Estrogen and Progesteron secretion by isolated cultured porcine thecal and granulosa cells. *Biology of Reproduction*. **26**, 943-952.
- Szabo, T., Medgyasszay, C. and Horvath, L., 2002.** Ovulation induction in nase (*Chondrostoma nasus*) using pituitary extract or GnRH analogue combined with domperidone, *Aquaculture*, **203**, 389-395.
- Tyler, C. R., Sumpter, J. P., Kawauchi, H. and Swanson, P., 1991.** Involvement of gonadotropin in the uptake of vitellogenin in to vitellogenic oocytes of the common carp. *General and Comparative Endocrinology*, **84**, 291-299.
- Venkatesh, B., Tan, C.H., Kime, D. M. and Lam, T. J., 1992.** Steroid metabolism in teleost gonads: purification and identification of metabolites by high performance liquid chromatography. *Steroids*, **57**, 275-281.
- Weil, C., Hansen, P., Hyam, D., Berton, B. and Crim, L., 1986.** Use of pituitary cells in primary culture to study the regulation of gonadotropin hormone (GtH) secretion in rainbow trout. *General and Comparative Endocrinology*. **62**, 202-209.
- Yaron, Z., 1995.** Endocrine control of gametogenesis and spawning induction in the carp. *Aquaculture*, **129**, 49-73.
- Zohar, Y., 1989.** Fish reproduction, its physiology and artificial manipulation, In: Shilo, M.C., Sargi, S.H., (Eds.), Fish culture in warm water systems,

problems and trends. CRC Press. PP, 65-119.

**Zohar, Y. and Mylonas, C.C., 2001.**

Endocrine manipulations of spawning

in cultured fish: from hormones to genes. *Aquaculture*, **197(1-4)**, 99-136.

# مطالعه مقایسه ای اثرات carp GnRH سنتزی و مخلوط هموزن هیپوفیز ماهی کپور بر استروئیدوزن اووسیت های کپور معمولی *Cyprinus carpio* در شرایط آزمایشگاهی

نگین سلامات<sup>۱\*</sup>؛ نعیم عرفانی مجد<sup>۲</sup>؛ محمود هاشمی تبار<sup>۳</sup>؛ مهرزاد مصباح<sup>۴</sup>؛ اکرم آهنگر پور<sup>۵</sup>

## چکیده

تخمندانهای ماهی کپور معمولی در مرحله ویتلوزنی در شرایط استریل خارج و سلولهای فولیکولهای تخمدانی با استفاده از تریپسین جداسازی شده و به صورت تک لایه کشت داده شد. سلول های کشت داده شده گروه کنترل در محیط M199 کشت داده شدند. محیط کشت گروه های آزمایش توسط  $100 \mu\text{l ml}^{-1}$  از CPH و carp GnRH (ترشحات سلول های هیپوفیز کشت داده شده با  $10^{-6}$ ،  $10^{-8}$  و  $10^{-10}$  M carp GnRH) غنی سازی شد. اثر مستقیم این فاکتورها بر ترشح ۱۷-آلفا-هیدروکسی پروژسترون ( $17\alpha$ -OHP) و ۱۷-بتا-استرادیول ( $E_2$ ) توسط سلول های فولیکولی جداشده در محیط کشت سلولی با استفاده از روش رادیوایمونواسی مورد بررسی قرار گرفت. با توجه به نتایج  $E_2$  هورمون اصلی ترشح شده توسط سلول های گرانولوزا و تکا کپور در محیط کشت بود. افزودن  $100 \mu\text{l ml}^{-1}$  از محلول  $10^{-10}$  مولار CPS-carp GnRH تاثیر معنی داری بر فعالیت آندوکرینی سلول های گرانولوزا و تکا کپور کشت داده نشده نداشت ( $P > 0.05$ ). از طرف دیگر، سلول های گرانولوزا و تکا کپور متاثر شده توسط غلظت های کمتر CPS-carp GnRH ( $10^{-6}$ ،  $10^{-8}$  M) افزایش  $4/02$  و  $3/74$  برابری در غلظت  $E_2$  و افزایش  $4/27$  و  $3/64$  برابری در غلظت  $17\alpha$ -OHP را نشان دادند که به طور معنی داری نسبت به CPH بیشتر بود ( $P < 0.05$ ). همچنین ترشح استروئیدی گروه تحریک شده توسط  $100 \mu\text{l ml}^{-1}$  از CPS و CPH نیز افزایش معنی داری داشت ولی بین این دو گروه تفاوت معنی داری مشاهده نشد ( $P > 0.05$ ).

**واژگان کلیدی:** *Cyprinus carpio*، کشت سلول، carp GnRH، هورمون های گنادوتروپینی، هورمون های استروئیدی

۱- گروه بیولوژی دریا، بخش بافت شناسی، دانشکده علوم دریایی و اقیانوسی، دانشگاه علوم و فنون دریایی خرمشهر، خرمشهر.

۲- گروه علوم پایه، بخش بافت شناسی، دانشکده دامپزشکی، دانشگاه شهید چمران اهواز. اهواز.

۳- بخش علوم کالبد شناسی، دانشکده پزشکی، دانشکده علوم پزشکی جندی شاپور، اهواز، ایران.

۴- بخش بهداشت و بیماریهای آیزیان، دانشکده دامپزشکی، دانشگاه شهید چمران اهواز، اهواز، ایران.

۵- بخش فیزیولوژی، دانشکده پزشکی، دانشکده علوم پزشکی جندی شاپور، اهواز، اهواز، ایران.

\*پست الکترونیکی نویسنده مسئول: [salamatnegin@yahoo.com](mailto:salamatnegin@yahoo.com)