

Research Article

# Hemolymph analyses in medicinal leeches, *Hirudo verbana* and *H. sulukii* (Hirudinida: Hirudinidae)

Kürtüral Z<sup>1</sup>, Çakıcı Ö.<sup>1\*</sup>

<sup>1</sup>Ege University, Science Faculty, Biology Department, Zoology Section 35100 Bornova, İzmir, Turkey

\*Correspondence: ozlem.cakici@ege.edu.tr

## Keywords

Medicinal leech,  
*Hirudo sulukii*,  
*Hirudo verbana*,  
Hemocyte,  
Hemolymph

## Abstract

The aim of this study was to determine the hemocyte type of medicinal leeches, *Hirudo sulukii* and *H. verbana*. It was also determined the fractions of hemolymph proteins in these leech species. According to the analyses, four types of hemocyte (prohemocyte, plasmatocyte, granulocyte, and eleocyte) were detected in two species. The prohemocytes have large nuclei, and their cytoplasm occupies a small area. The plasmatocytes are the most abundant hemocyte type. They are polymorphic cells and are found together as aggregations. The granulocytes are generally rounded in shape and typically have large granules in their cytoplasm. The eleocytes are the least found cells in hemolymph and have few granules in their cytoplasm. The areas of hemocyte types did not differ between the two species. Using polyacrilamid disc gel electrophoresis, it was determined that the hemolymph proteins of *H. verbana* were separated into 11 fractions or fraction groups. On the other hand, they were separated into 10 fractions or fraction groups in *H. sulukii*. In addition to qualitative differences, there were important quantitative differences between electropherograms of the two leech species. Therefore, these findings made a contribution to studies considering *Hirudo sulukii* as a new species different from *Hirudo verbana*.

## Article info

Received: May 2023

Accepted: February 2025

Published: May 2025



Copyright: © 2023 by the authors. Licensee MDPI, Basel, Switzerland. This article is an open access article distributed under the terms and conditions of the Creative Commons Attribution (CC BY) license (<https://creativecommons.org/licenses/by/4.0/>).

## Introduction

Invertebrates make up the largest group of animal groups and can be found almost anywhere. They can make self and non-self distinctions thanks to their innate immunity (Jiravanichpaisal *et al.*, 2006; Aladailah *et al.*, 2007; Melillo *et al.*, 2018). Invertebrates have no antibodies and lymphocytes that form the basis of the humoral immune system. But invertebrates possess mechanisms that are seen as precursors of vertebrate immunity (Arıkan and Çakıcı, 2021). Innate immune system of invertebrates is made up of cellular and humoral parts working together to defend against unwanted organisms (Castellanos-Martinez *et al.*, 2014). Cellular immunity including hemocyte or coelomocyte is responsible for phagocytosis, encapsulation, nodule formation and the production of reactive oxygen intermediates (Pipe, 1992; Hegaret *et al.*, 2003; Canesi and Prochazkova, 2014). Hemocytes circulate in the hemolymph (Pham and Schneider, 2009) and have other important functions such as nutrient transport, digestion, excretion and wound repair (Cheng, 1975; Cheng, 1981; Chu, 2000; Franchini and Ottaviani, 2000; Mount *et al.*, 2004). In invertebrates, different hemocyte types have been described (Buchmann, 2014). Humoral immunity contains antimicrobial peptides, phenoloxidase and lysozyme (Boulanger *et al.*, 2006; Ovchinnikova *et al.*, 2006). Prophenoloxidase system in some invertebrate phyla, including several insects, crabs, and worms, is an analogue to the complement system. This system is activated by a group of enzymes (Beck and Habicht, 1996; Atalayın *et al.*, 2017).

Leeches have been widely used since ancient times to lower blood pressure (Gödekmerdan *et al.*, 2011). In addition to their therapeutic effects on humans, leeches can also feed on vertebrates and invertebrates as parasites (Sağlam, 2012). Medicinal leeches of the genus *Hirudo* are used in traditional and complementary medicine practices (Singh, 2010). *Hirudo medicinalis* has been used in medicine since ancient times (Eldor *et al.*, 1996; Orevi *et al.*, 2000). The medicinal leech species identified so far in Turkey are *H. medicinalis*, *H. verbana* and *H. sulukii* (Karataş and Dernekbaşı, 2018). As we mentioned above, hemocytes have important functions in immune defense. On the other hand, there is no study about hemolymph analyses on *H. verbana* and *H. sulukii*. Therefore, we performed some analyses to determine whether there were differences in terms of hemocyte type, hemocyte area and hemolymph proteins in hemolymph of *H. verbana* and *H. sulukii*.

## Material and methods

### *Hemocyte Preparation*

Hemolymph specimens of leeches were collected into hematocrit tubes and then smears were prepared on clean slides. Air-dried hemolymph smears were stained with Wright's stain for one minute (Seiverd, 1972). The slides were rapidly washed with phosphate-buffered saline and then mounted with entellan. They were examined with a Zeiss Axioscope A1 light microscope and photographed using AxioCam Erc 5s digital camera.

### *Determination of Hemolymph Proteins by Electrophoresis*

The hemolymph samples were centrifuged for 5 min at 600 ×g. The electrophoretic separation of hemolymph proteins was performed according to Arikan *et al.* (2006), who slightly modified and applied the polyacrylamide disc gel electrophoresis method by Davis (1964). Electrophoretic separations were run using a Canalco Model 1200 electrophoresis apparatus (Canalco Inc., Rockville, Md., USA) at room temperature (20-25°C). Accordingly, a pH 6.7 stacking gel was layered above the pH 9 separation gel of 7.5% polyacrylamide, together with a pH 8.3 tris-glycine buffer system. 1000 µL of Brom Phenol Blue was added to the buffer solution at the top of the electrophoresis bath to monitor the separation. Gels containing separated proteins were stained with 0.5% Amido Black (Naphtol Blue Black 10- B), and the excess stain was passively discharged in 7% acetic acid baths. The densitometric curves of the separations were obtained at 500 nm by means of a Gelman ACD-15 39430 densitometer (Gelman Instrument Co., Ann Arbor, Mi., USA), and they were photographed. Qualitative evaluation of the gels was made directly from the electropherograms.

### *Statistical Analyses*

For statistical analysis of hemocytes, a total of 100 hemocyte areas of each species were measured using ZEN 3.2 (blue edition) program. In a comparison of the two groups, an independent t-test was used for parametric groups. Statistical analyses were made by using IBM SPSS Statistics 25.0

(IBM SPSS Statistics for Windows, Version 25.0. Armonk, NY: IBM Corp.) Data were presented as mean with standard deviation. We set the significance level at  $p \leq 0.05$ .

## **Results**

### *Hemocyte types in *H. verbana**

Prohemocyte, plasmatocyte, granulocyte, and eleocyte hemocyte types were detected in hemolymph of *H. verbana*. Of these cells, prohemocytes have large nuclei and their cytoplasm occupies a small area (Fig. 1a). In plasmatocytes, the nucleus is located in the center and the cytoplasm occupies a larger area. However, plasmatocytes appear as polymorphic forms and are found together as aggregations. (Fig. 1b). Granulocytes are cells that are rarely found in hemolymph and have a few granules in their cytoplasm (Fig. 1d).

### *Hemocyte types in *H. sulukii**

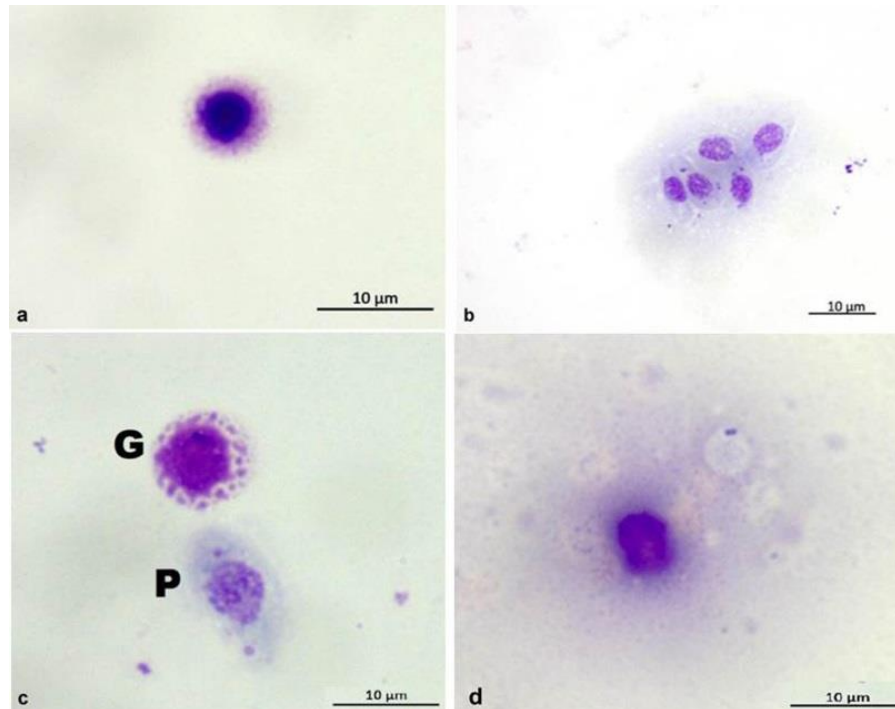
Hemocyte types were determined as prohemocyte, plasmatocyte, granulocyte and eleocyte in hemolymph of *Hirudo sulukii*. The nuclei of prohemocytes are large enough to fill the entire cell, and the cytoplasm occupies a small area (Fig. 2a). In plasmatocytes, the nucleus is in the center part of the cell and the cytoplasm occupies a larger area (Fig. 2b). Granulocytes usually have large granules in their cytoplasm (Fig. 2c). Eleocytes are not frequently found cells, and have few granules in their cytoplasm (Fig. 2d).

### *Statistical Comparison of Hemocyte Types in *H. verbana* and *H. sulukii**

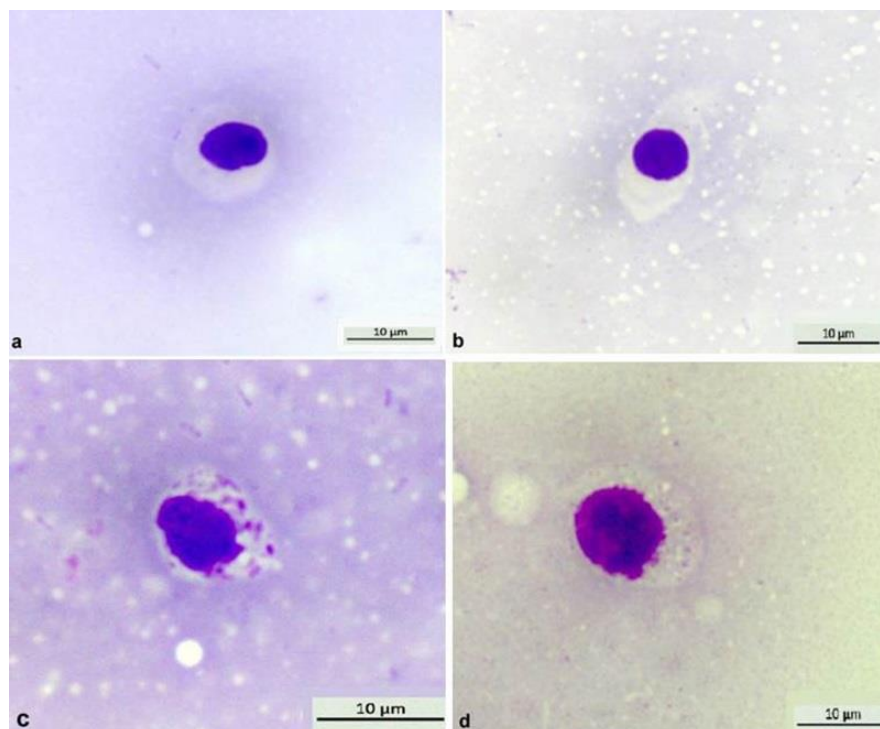
When areas of prohemocyte, plasmatocyte, granulocyte, and eleocyte cells belonging to

*Hirudo verbana* and *Hirudo sulukii* were compared, it was detected that there was no difference in hemocyte areas between leech species. In other words, there was no difference between the two types in terms

of areas of prohemocyte, plasmatocyte, granulocyte and eleocyte hemocytes. These data were presented in detail in Table 1.



**Figure 1:** Hemocyte types of *Hirudo verbana* a) prohemocyte, b) plasmatocyte aggregations, c) granulocyte (G) and plasmatocyte (P), d) eleocyte.



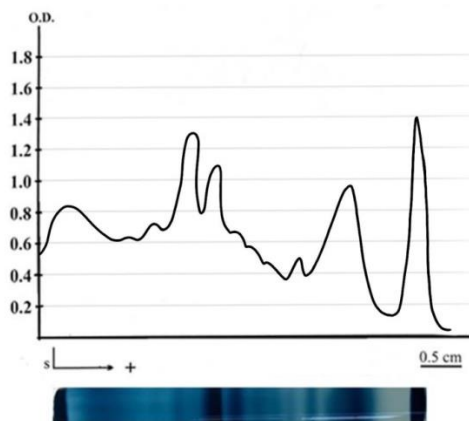
**Figure 2:** Hemocyte types of *Hirudo sulukii* a) prohemocyte, b) plasmatocyte, c) granulocyte, d) eleocyte.

**Table 1: Comparison of the areas of *Hirudo verbana* and *Hirudo sulukii* hemocyte types ( $\mu\text{m}^2$ ), (independent t-test).**

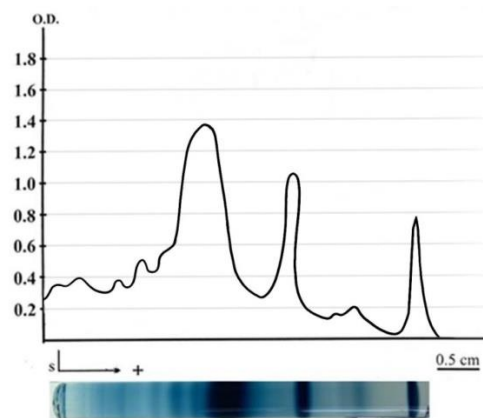
Hemocyte Types	Species	Mean	SD	t-value	Sig.(2-tailed)
Prohemocyte	<i>H. verbana</i>	35.29	6.33	-0.946	0.350
	<i>H. sulukii</i>	37.05	5.44	-0.946	0.350
Plasmatocyte	<i>H. verbana</i>	48.62	11.77	0.691	0.491
	<i>H. sulukii</i>	47.05	8.13	0.691	0.491
Granulocyte	<i>H. verbana</i>	56.40	4.43	-0.629	0.352
	<i>H. sulukii</i>	57.14	4.74	-0.629	0.352
Eleocyte	<i>H. verbana</i>	80.54	8.70	-1.125	0.275
	<i>H. sulukii</i>	84.28	5.87	-1.125	0.275

### Electrophoretic analysis of hemolymph proteins

According to electrophoretic and densitometric analyses, *H. verbana*'s hemolymph proteins were divided into 11 fractions or fraction groups (Fig. 3). In *H. sulukii*, hemolymph proteins were divided into 10 fractions or fraction groups (Fig. 4). In addition to qualitative differences, there were important quantitative differences between the electropherograms representing the two species (Figs. 3 and 4).



**Figure 3: Densitometric tracing curve of a sample representing *Hirudo verbana* together with its gel photograph showing electrophoretic separation of hemolymph proteins. O.D: Optical density, S: Start (junction between stacking and separation gels).**



**Figure 4: Densitometric tracing curve of a sample representing *Hirudo sulukii* together with its gel photograph showing electrophoretic separation of hemolymph proteins. O.D: Optical density, S: Start (junction between stacking and separation gels).**

### Discussion

Among invertebrates, annelids have a closed vascular system distinct from the coelomic fluid (Boidin-Wichlacz *et al.*, 2012). When we examined *Hirudo verbana* and *Hirudo sulukii* species in terms of hemocyte types, it was found that prohemocytes, plasmatocytes, granulocytes, and eleocytes were present in both species. Prohemocytes are the smallest groups of precursor stem cells circulating in the hemolymph. They are characterized by having larger nuclei and a smaller cytoplasmic area within the hemolymph

(Öztürk *et al.*, 2018). Plasmatocytes are the most abundant cell types in the hemolymph. In addition, these cells are seen in different forms in the hemolymph, that is, polymorphic (Yamashita and Iwabuchi, 2001). Plasmatocytes are considered as vertebrates' monocytes. These cells, like monocytes, have phagocytic activity (Evans *et al.*, 2003; Hartenstein, 2006). Some plasmatocytes form aggregations. This is accepted as a defensive response (Ray *et al.*, 2015; Atalayın *et al.*, 2017). The second most abundant cell type in the hemolymph is granulocyte, which contains granules of various sizes in their cytoplasm (Larouche *et al.*, 2019). Granulocytes resemble vertebrate cells such as basophils, neutrophils and eosinophils. These cells perform immune functions such as phagocytosis, encapsulation of pathogens, wound healing and blood coagulation. (Gupta 1991; Atalayın *et al.*, 2017). In addition, some invertebrate species have another type of cell that contains a high percentage of granules in the hemolymph. These cells are called eleocyte. These hemocytes have vesicle-shaped structures in their cytoplasm (Roubalová *et al.*, 2018).

In our study, areas of hemocyte types (prohemocyte, plasmatocyte, granulocyte, and eleocyte) were compared in two leech species, *Hirudo sulukii* and *Hirudo verbana*. It was determined that there was no difference between the areas of hemocyte cells of the two species. In addition, the same hemocyte types were detected in *H. medicinalis* (Atalayın *et al.*, 2017). Because there are limited studies on leeches, we can compare our findings to some other invertebrate species. In a study

performed on *Decticus verrucivorus*, *Eupholidoptera smyrnensis* and *Glyphotmethis*, hemocyte types were determined as prohemocyte, plasmatocyte, granulocyte, spherulocyte and oenocytoid (Öztürk *et al.*, 2018). Spherulocytes and oenocytoids are present in these species, while eleocytes are absent.

Various researchers who work on blood-plasma proteins of amphibians and reptilians using biochemical methods (Chen, 1967; Ferguson, 1980; Arıkan *et al.* 1998, 1999; Arıkan and Çiçek, 2011; Afsar *et al.* 2014) found that age, gender, seasonal, physiological and environmental factors were effective on the number, concentration and speed of protein fractions in separation of plasma proteins. It was stated that among these factors, age, gender, seasonal, physiological and environmental factors caused quantitative differences, whereas hereditary variations led to qualitative differences. In the present study, differences were determined between electropherograms of *H. verbana* and *H. sulukii* species. Therefore, we can say that our electrophoretic analysis results supported the DNA studies in *H. verbana* and *H. sulukii* species made by Sağlam *et al.* (2016).

In this study, we found that both *Hirudo* species had similar hemocyte types and hemocyte areas. On the other hand, while hemolymph proteins of *H. verbana* were separated into 11 fractions or fraction groups, they were separated into 10 fractions or fraction groups in *H. sulukii*. In addition to qualitative differences, we detected important quantitative differences between electropherograms of two leech species. Therefore these findings

contributed to studies in which *Hirudo sulukii* was evaluated as a new species different from *Hirudo verbana*.

### Acknowledgments

This research is based on the MSc thesis of the first author and supported by Ege University Scientific Research Projects Coordination (Project ID: 21354). We also thank the Serology and Genetics laboratory of the Biology Department at Ege University for the use of the photomicroscope.

### Conflicts of interest

The authors declare that they have no competing interests.

### References

- Afsar, M., Afsar, B. and Arıkan, H., 2014. *Rana macrocnemis* Boulenger, 1885, from the Emir Mountains in western inner Anatolia (Turkey). *Herpetozoa*, 26 (3/4), 115-123.
- Aladailah, S., Nair, S.V., Birch, D. and Raftos, D.A., 2007. Sydney rock oyster (*Saccostrea glomerata*) hemocytes: Morphology and function. *Journal of Invertebrate Pathology*, 96(1), 48-63. DOI:10.1016/j.jip.2007.02.011
- Arıkan, H., Atatür, M.K. and Mermer, A., 1998. An Investigation on the Blood-Serum Proteins of *Chalcides ocellatus* (Sauria: Scincidae) Populations from Southern Anatolia. *Turkish Journal of Zoology*, 22(2), 175-177.
- Arıkan, H., Atatür, M. K., Çevik, İ. E. and Kumlutaş, Y., 1999. A Serological Investigation of *Lacerta viridis* (Laurenti, 1768) (Sauria: Lacertidae) Populations in Turkey. *Turkish Journal of Zoology*, 23(3), 227-230.
- Arıkan, H., Alpagut Keskin, N., Çevik, İ.E. and Ilgaz, Ç., 2006. Age-dependent variations in the venom proteins of *Vipera xanthina* (Gray, 1849) (Ophidia: Viperidae). *Türkiye Parazitoloji Dergisi*, 30(2), 163-165.
- Arıkan, H. and Çiçek, K., 2011. Changes in blood-serum proteins, erythrocyte count, and size of *Pelophylax bedriagae* (Camerano, 1882) during metamorphosis (Anura: Ranidae), *Herpetozoa*, 24(1/2), 3-11.
- Arıkan, H. and Çakıcı Ö., 2021. Temel İmmünoloji. Ege Üniversitesi Fen Fakültesi Yayınları, No:221, Ege Üniversitesi Basımevi, Bornova-İzmir, Türkiye, 177 P.
- Atalayın, I., Akat, E., Arıkan, H. and ve Uyanıkgil, Y., 2017. Light Microscopy Investigation of The Immune System Cells of *Hirudo Medicinalis* Linnaeus, 1758, *Journal of Advanced Zoology*, 38(1), 07-13.
- Beck, G. and Habicht, G.S., 1996. Immunity and the invertebrates. *Scientific American*, 275(5), 60-66. DOI: 10.1038/scientificamerican1196-60
- Boidin-Wichlacz, C., Vergote, D., Slomianny, C., Jouy, N., Salzet, M. and Tasiemzki, A., 2012. Morphological and functional characterization of leech circulating blood cells: role in immunity and neural repair. *Cellular and Molecular Life Science*, 69(10), 1717-1731. DOI:10.1007/s00018-011-0897-x
- Boulanger, N., Bulet, P. and Lowenberger, C., 2006. Antimicrobial

- peptides in the interactions between insects and flagellate parasites. *Trends in Parasitology*, 22(6), 262–268. DOI:10.1016/j.pt.2006.04.003
- Buchmann, K., 2014.** Evolution of innate immunity: clues from invertebrates via fish to mammals. *Frontiers in Immunology*, 5, 459. DOI:10.3389/fimmu.2014.00459
- Canesi, L. and Prochazkova, P., 2014.** The Invertebrate Immune System as a Model for Investigating the Environmental Impact of Nanoparticles. In: Nanoparticles and the immune system. *Safety and Effects*, 91–112. DOI:10.1016/B978-0-12-408085-0.00007-8
- Castellanos-Martínez, S., Prado-Alvarez, M., Lobo-da Cunha, A., Azevedo, C. and Gestal, C., 2014.** Morphologic, cytometric and functional characterization of the common octopus (*Octopus vulgaris*) hemocytes. *Developmental Comparative Immunology*, 44(1), 50–58. DOI:10.1016/j.dci.2013.11.013
- Chen, P.S., 1967.** Separation of proteins in different amphibian species by polyacrylamide gel electrophoresis.-experientia. *Basel*, 23, 483–485.
- Cheng, T.C., 1975.** Functional morphology and biochemistry of molluscan phagocytes. *Ann. NY Acad Sci.*, 226, 343–379. DOI: 10.1111/j.1749-6632.1975.tb35116.x
- Cheng, T.C., 1981.** Bivalves. In: Invertebrate Blood Cells. Academic Press, London. pp 233–300.
- Chu, F.L., 2000.** Defense mechanisms of marine bivalves. In: Fingerman, M., Nagabushnam, R. (eds.). Recent advances in marine biotechnology immunobiology and pathology. Science Publishers Inc., UK. pp 1–42.
- Davis, B.J., 1964.** Disc electrophoresis - II. Method and application to human serum proteins, *Annals of the New York Academy of Sciences*, New York. pp 404–427.
- Eldor, A., Orevi, M. and Rigbi, M., 1996.** The role of the leech in medical therapeutics. *Blood Review*, 10(4), 201–209. DOI:10.1016/s0268-960x(96)90000-4
- Evans, C.J., Hartenstein, V. and Banerjee, U., 2003.** Thicker than blood: conserved mechanisms in *Drosophila* and vertebrate hematopoiesis, *Developmental Cell*, 5(5), 673–690. DOI:10.1016/s1534-5807(03)00335-6
- Ferguson, A., 1980.** Biochemical systematics and evolution. Blackie, Glasgow, 194 P.
- Franchini, A. and Ottaviani, E., 2000.** Repair of molluscan tissue injury: role of PDGF and TGF- $\beta$ . *Tissue Cell*, 32(4), 312–321. DOI:10.1054/tice.2000.0118
- Godekmerdan, A., Arusan, S., Bayar, B. and Saglam, N., 2011.** Medicinal leeches and hirudotherapy, *Turkish Journal of Parasitology*, 35(4), 234–239. DOI: 10.5152/tpd.2011.60.
- Gupta, A.P., 1991.** Immunology of insects and other arthropods. CRC Press, Boca. Raton, Florida. 520 P.
- Hartenstein, V., 2006.** Blood cells and blood cell development in the animal kingdom, *Annual Review Cell Developmental Biology*, 22, 677–712. DOI:10.1146/annurev.cellbio.22.010605.093317



- Hegaret, H., Wikfors, G.H. and Soudant, P., 2003.** Flow cytometric analysis of haemocytes from eastern oysters, *Crassostrea virginica*, subjected to a sudden temperature elevation II. Haemocyte functions: Aggregation, viability, phagocytosis, and respiratory burst. *Journal of Experimental of Marine Biology and Ecology*, 293(2), 249-265. DOI:10.1016/S0022-0981(03)00235-1
- Jiravanichpaisal, P., Lee, B.L. and Soderhall, K., 2006.** Cell-mediated immunity in arthropods: Hematopoiesis, coagulation, melanization and opsonization. *Immunobiology*, 211(4), 213-236. DOI: 10.1016/j.imbio.2005.10.015.
- Karataş, E. and Dernekbaşı, S., 2018.** A Research on the Culture of Medicinal Leech (*Hirudo verbana* Carena, 1820) in Aquarium Conditions. *Gaziosmanpasa Journal of Scientific Research*, 7(2), 27-37.
- Larouche, C. B., Marfisi, J. B., Attard, L., Nemeth, N. and Beaufrère, H., 2019.** Hemolymph cytology, hemocyte count, glucose, and electrolyte reference intervals in 93 *Cameroon red tarantulas* (*Hysterocrates gigas*), *Veterinary Clinical Pathology*, 48(3), 461-468. DOI:10.1111/vcp.12778
- Melillo, D., Marino, R., Italiani, P. and Boraschi, D., 2018.** Innate Immune Memory in Invertebrate Metazoans: A Critical Appraisal. *Frontiers in Immunology*, 9, 1915. DOI:10.3389/fimmu.2018.01915
- Mount, A.S., Wheeler, A.P., Paradkar, R.P. and Snider, D., 2004.** Hemocyte mediated shell mineralization in the eastern oyster. *Science*, 304(5668), 297-300. DOI:10.1126/science.1090506.
- Orevi, M., Eldor, A., Giguzin, I. and Rigbi, M., 2000.** Jaw anatomy of the blood-sucking leeches, *Hirudinea Limnatis nilotica* and *Hirudo medicinalis*, and its relationship to their feeding habits. *Journal of Zoology*, 250(1), 121-127. DOI:10.1111/j.1469-7998.2000.tb00583.x
- Ovchinnikova, T.V., Balandin, S.V., Aleshina, G.M., Tagaev, A.A., Leonova, Y.F., Krasnodembsky, E.D., Men'shenin, A.V. and Kokryakov, V.N., 2006.** Aurelin, a novel antimicrobial peptide from jellyfish *Aurelia aurita* with structural features of defensins and channel-blocking toxins. *Biochemical and Biophysical Research Communication*, 348(2), 514-523. DOI:10.1016/j.bbrc.2006.07.078
- Öztürk, G., Çakıcı, Ö. and Arıkan, H., 2018.** Morphological characterization of hemocyte types in some species belonging to Tettigoniidae and Pamphagidae (Insecta: Orthoptera), *Turkish Journal of Zooogy*, 42(3), 340-345. DOI:10.3906/zoo-1711-11
- Pham, L.N. and Scheineder, D.S., 2009.** Evidence for specificity and memory in the insect innate immune response, In: Rolff, J. and Reynolds, S. (eds) *Insect Immunology*. Oxford University Press, New York. pp 49-68.
- Pipe, R.K., 1992.** Generation of reactive oxygen metabolites by the haemocytes of the mussel *Mytilus edulis*. *Developmental Comparative Immunology*, 16(2-3), 111-122.
- Ray, S., Mukherjee, S., Bhunia, N.S., Bhunia, A.S. and Ray, M., 2015.**

- Immunotoxicological threats of pollutants in aquatic invertebrates. Emerging Pollutants in the Environment-Current and Further Implications. In Tech, pp 149-167.
- Roubalová, R., Plytycz, B., Pacheco, N.I.N. and Bilej, M., 2018.** Annelida: Environmental Interactions and Ecotoxicity in Relation to the Earthworm Immune System. In: Cooper, E. (eds) Advances in Comparative Immunology. Springer, Cham. pp 933-951.
- Sağlam, N., 2012.** Tıbbi sülükler ve ticareti. *Sumder*, 43-49, 52-58.
- Sağlam, N., Saunders, R., Lang, S. A. and Shain, D.H., 2016.** A new species of *Hirudo* (Annelida: Hirudinidae): historical biogeography of Eurasian medicinal leeches, *BMC Zoology*, 1, 5. DOI:10.1186/s40850-016-0002-x
- Seiverd, C.E., 1972.** Hematology for medical technologists. 4th ed. Lea and Febiger, Philadelphia, Pennsylvania. 840 P
- Singh, A.P., 2010.** Medicinal leech therapy (Hirudotherapy): a brief overview. *Complementary Therapies in Clinical Practice*, 16(4), 213-215.
- Yamashita, M. and Iwabuchi, K., 2001.** *Bombyx mori* prohemocyte division and differentiation in individual microcultures, *Journal of Insect Physiology*, 47(4-5), 325-331. DOI:10.1016/s0022-1910(00)00144-x