

Protein profiling for phylogenetic relationship in snakehead species

Haniffa M.A.^{1*}; Jeya Sheela P.¹; James Milton M.¹; Kavitha K.¹

Received: August 2015

Accepted: April 2017

Abstract

Protein banding pattern of eight snakeheads – *Channa* species viz., *Channa striatus*, *Channa marulius*, *Channa punctatus*, *Channa diplogramme*, *Channa bleheri*, *Channa gachua*, *Channa stewartii* and *Channa aurantimaculata* collected from different regions of India were used to study the phylogenetic relationship among them. The banding pattern from muscle protein indicated a unique profile for each species and the electrophoregrams showed similarities among the species studied. In the SDS-PAGE, a maximum of 12 protein bands were obtained for *C. gachua* followed by 11 for *C. diplogramme* and 10 for *C. marulius* whereas less number of bands were recorded for the remaining species. Molecular weight of the protein bands varied from 16 kDa - 232 kDa. UPGMA (Unweighted Pair Group Method with Arithmetic Mean) dendrogram revealed that the phylogenetic relationship was very close among *C. aurantimaculata* and *C. bleheri* and also between *C. gachua* and *C. stewartii*.

Keywords: Snakehead, Phylogenetic relation, SDS- PAGE, Protein banding

1- Centre for Aquaculture Research and Extension (CARE), St.Xavier's College, Palayamkottai, Tamilnadu- 627002, India. Ph- 0462-2560670

*Corresponding author's Email: haniffacare@gmail.com

Introduction

Genetic diversity/variation has vital importance in the understanding and management of individuals and populations. Application of electrophoresis and chromosomal techniques have significantly increased to observe genetic variation and have for many years been considered as the standard tool in genetic studies of wild and cultured fish stocks. Different molecular tagging and biochemical methods for species identification have been widely applied in fish since 1960 (Saad *et al.*, 2002; Na-Nacron *et al.*, 2004; Yilmaz *et al.*, 2007) and proteins/enzymes are used as genetic markers as direct products of gene action (Crick, 1963; Nirenberg *et al.*, 1963). Gene controlled proteins form the structural basic source of genetic information at various levels of species organization. Due to the existence of morphological plasticity among individuals, conventional morphological characters are often found to be deceiving in the exact detection of a species (Menon, 1989). Electrophoretic techniques have been found to be useful in studying problems involving taxonomic ranks, and solving taxonomic ambiguity and synonymous confusion. No doubt, genetic markers are superior to artificial markers and tags as they are natural and can be applied to all stages of animals (Kapila and Kapila, 1996). In SDS-PAGE, protein is separated according to its molecular weight. Resolution of this technique is very high and therefore

it could be used as a reliable tool for taxonomic purposes (Bartke *et al.*, 1966).

Snakeheads, commonly called as murrels are obligatory air-breathing and precious edible freshwater fish that reside in swamps, slow-flowing streams and in crevices near riverbanks. Regarding taxonomy, they belong to the family Ophiocephalidae/ Channidae (Qasim, 1966). Taxonomy of these fishes is in flux, but leading authorities on snakehead systematics currently recognized 26 species of *Channa* and 3 of *Parachanna* (Haniffa, 2010). Taxonomical mystery and synonymous confusion are more common in snakeheads rather than in other fishes. In this regard, Allen *et al.* (2011) solved the 146 year old taxonomic puzzle of *Channa diplogramme* and *C. micropeltes* and finally, the resurrection of *C. diplogramme* from the synonymy of *C. micropeltes* has been confirmed 146 years after its initial description and 134 years after it was synonymised. Within parts of their native ranges, some species of snakeheads are highly valued as food fishes (*C. striatus*, *C. marulius*, *C. punctatus* and *C. diplogramme*), whereas others are ornamental in Southeast Asia (*C. gachua*, *C. bleheri*, *C. stewarti* and *C. aurantimaculata*) because of their beautiful colouration.

In the present study, an attempt was made to detect the diversity of eight different snakehead species collected from different locations of India viz: *C. aurantimaculata* (Musikasinthorn,

2000), *C. bleheri* (Vierke, 1991), *C. gachua* (Hamilton, 1822), *C. marulius* (Hamilton, 1822), *C. diplogramme* (Cuvier, 1831), *C. punctatus* (Bloch, 1793), *C. stewartii* (Playfair, 1867) and *C. striatus* (Bloch, 1797) using electrophoresis technique– SDS-PAGE, as a basic tool for their protein identification.

Materials and methods

Preparation of snakehead fish muscle tissue

Live samples of snakeheads viz: *C. striatus* (river Periyar, 10°10' N, 76°13'E, Kerala), *C. punctatus* (river Tamirabarani, 80°44' N 77°44' E, Tamil Nadu), *C. marulius* (Bhavanisagar Dam, 11°58' N 77°58' E, Tamilnadu), *C. diplogramme* (river Pampa, 9°27' N 6°78' E, Kerala) and *C. aurantimaculata*, *C. bleheri* and *C. stewartii* (river Brahmaputra, 24°8' N 89°42' E, Assam) were collected from different geographical locations (Fig. 1). The muscle tissue of the fish was sliced into smaller pieces and kept at -20°C prior to freeze-drying. Freeze dried tissue was homogenized to a powder form. Extraction of protein from fish muscle tissue was carried out following Lay-Harn Gam *et al.* (2006). Briefly, 1.0 mg of powdered fish muscle was extracted using 1 ml of 40 mM Tris (pH 8.8), vortexed and centrifuged at 12,000 rpm for 30 minutes at 4°C and the supernatant was recovered.

Sodium dodecyl sulphate-polyacrylamide gel electrophoresis (SDS-PAGE)

SDS-PAGE was performed as described by Laemmli *et al.* (1970) in 10% Polyacrylamide gel. Protein samples were then loaded and electrophoresis was performed at a constant voltage of 200 - 245 vs. The run was stopped when the dye front was 2 to 3 mm away from the bottom edge of the gel. On the completion of electrophoresis, the glass sandwich was disassembled. The stacking gel was discarded and the resolving gel was stained using Coomassie Blue. Molecular weights of the proteins were determined by comparing relative mobility of protein bands to the standard protein markers. The similarity index was calculated as 'Similarity Index (S) = Number of common bands \times 2 / Total number of bands in both samples', according to Lamont *et al.* (1986). The NTSYS and TL 100 (Total Lab 100) software were used for the calculations and analysis. UPGMA (Unweighted Pair Group Method with Arithmetic Mean) dendrogram was constructed using the similarity coefficient.

Results

In the present study, protein isolated from the tissue of eight different *Channa* sp. was subjected to SDS-PAGE and analysed using TL 100 software (Fig. 2).

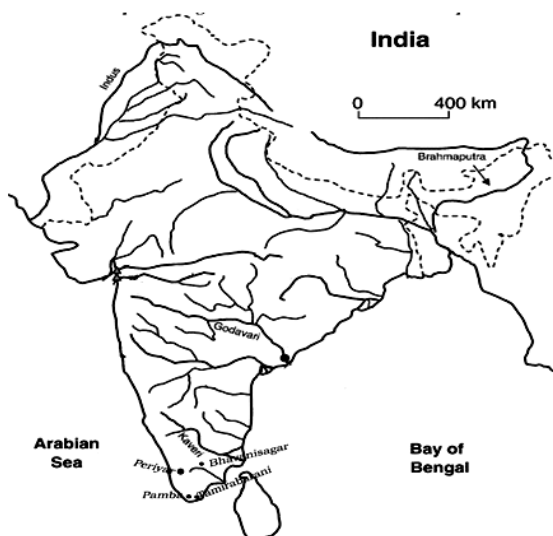


Figure 1: Map showing the collection sites of *Channa* sp.

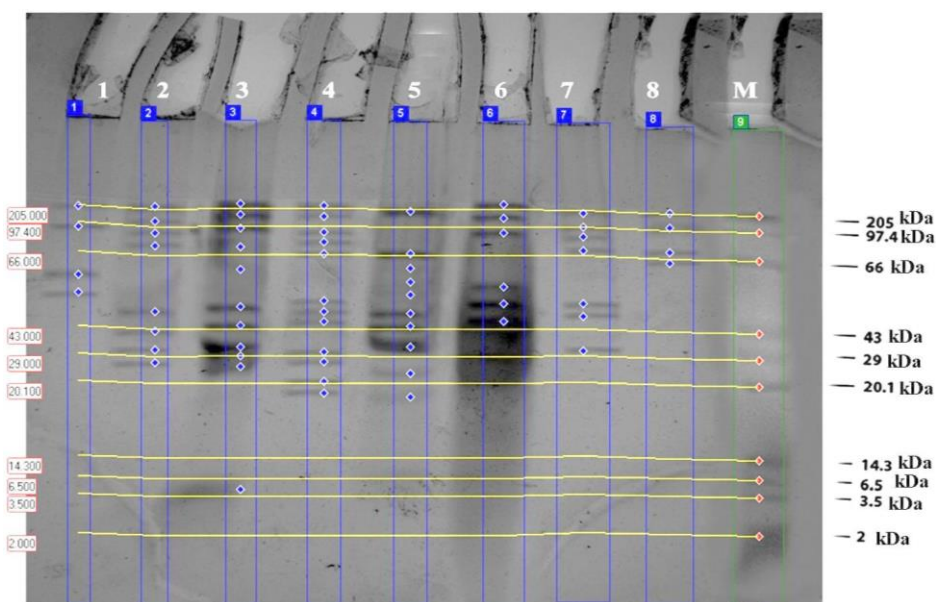


Figure 2: Protein profiling of muscle tissue of eight Indian *Channa* sp.
 Note: 1. *Channa aurantimaculata*, 2. *Channa bleheri*, 3. *Channa diplogramme*, 4. *Channa gachua*, 5. *Channa marulius*, 6. *Channa punctatus*, 7. *Channa striatus*, 8. *Channa stewartii* and M- Protein Marker

A total of 62 bands were observed; the highest number of (12) bands was found in *C. gachua*, followed by 11 bands in *C. diplogramme* and 10 bands in *C. marulius*, while the least number of bands (4) was found both in *C. stewartii* and *C. aurantimaculata*. The

total number of bands for each *Channa* species has been recorded in Table 1. Using Total Lab 100 protein analyzer software the molecular weight and the Rf value of each band were calculated. The molecular weights of proteins ranging from 16 kDa to 232 kDa were

recorded in Table 1. The least molecular weight protein (16.64 kDa) was recorded in *C. diplogramme* with the highest Rf value 0.76 whereas, the highest molecular weight protein (232.65 kDa) was found in *C. punctatus* with the lowest Rf value of 0.17 (Table 1).

NTSYS pc software was used to analyze the phylogenetic relationship based on protein banding pattern. The similarity coefficient was calculated on the basis of presence and absence of bands which ranged from 0.25–0.80, and a UPGMA dendrogram was constructed using the similarity coefficient (Fig. 3). The clusters obtained from the dendrogram showed that the eight species of *Channa* were grouped into two clades C₁ and C₂ with a similarity coefficient of 35% holding *C. striatus* in a separate clade. C₁ were again divided into two sub-clades C₁S₁ and C₁S₂ with a similarity coefficient of 44%. The C₁S₁ clade holds *C. aurantimaculata* and *C. bleheri* with a similarity of 80%.

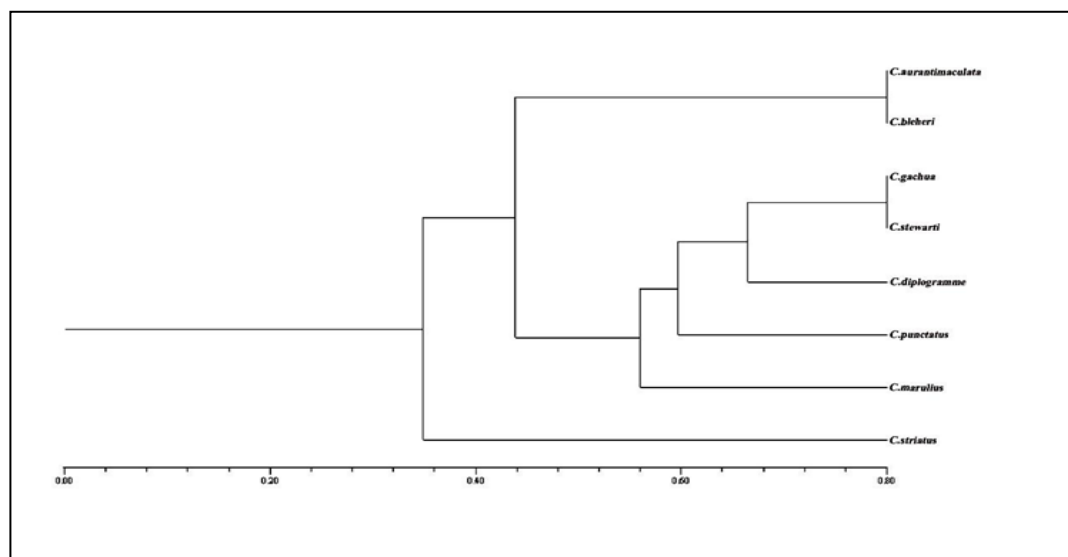
The C₁S₂ clade subdivides into C₁S₂a and C₁S₂b with a similarity of 56%. The C₁S₂a clade further divides into C₁S₂a₁ and C₁S₂a₂. The C₁S₂a₁ divides into two clades holding *C. gachua* and *C. stewarti* with a similarity of 80% in the upper clade and *C. diplogramme* with a similarity of 66% in the lower clade. Among the eight species, *C. aurantimaculata* and *C. bleheri* and *C. gachua* and *C. stewarti* shares more similarity between them.

Discussion

Different electrophoretic techniques have been conducted to identify the differences among fish species all over the world and muscle protein is commonly used to assess the polymorphism among fish species (Smith, 1990; Rashed *et al.*, 2000). The electrophoretic techniques used for separation of proteins have their own limitations as well. However, biochemical as well as genetic studies has been carried out by many Indian scientists for the evaluation of genetic distances in varied fish species like mullet, *Mugil cephalus* (Vijayakumar, 1992); oil sardine, *Sardinella longiceps* (Venkita Krishnan, 1992) and *Lactarius lactarius*. Huang *et al.* (2006) used Isoelectric focusing (IEF), sodium dodecyl sulfate-polyacrylamide gel electrophoresis (SDS-PAGE), and two-dimensional (2-D) gel electrophoresis for species identification of red snapper (*Lutjanus campechanus*). The electropherogram generated by SDS-PAGE showed difference both in the number of bands and the molecular weight of the sarcoplasmic proteins between two species of *Orthrias insignis euphraticus* and *Cyprinion macrostomus* (Yilmaz *et al.*, 2005). Similarly, when the liver proteins of six species belonging to the Cyprinidae family, Acheilognathinae, Leuciscinae and Gobioninae subfamilies were separated using SDS-PAGE, *Cyprinus carpio* and *Pseudogobius esocinus* showed the smallest genetic distance.

Table 1: Molecular weights and Rf values of different *Channa* sp.

Ref Band No.	<i>C. aurantimaculata</i>		<i>C. bleheri</i>		<i>C. diplogramme</i>		<i>C. gachua</i>		<i>C. marulius</i>		<i>C. punctatus</i>		<i>C. striatus</i>		<i>C. stewarti</i>	
	MW (kDa)	Rf	MW (kDa)	Rf	MW (kDa)	Rf	MW (kDa)	Rf	MW (kDa)	Rf	MW (kDa)	Rf	MW (kDa)	Rf	MW (kDa)	Rf
1	191.16	0.18	217.96	0.17	232.76	0.17	218.04	0.17	185.45	0.18	232.65	0.17	179.10	0.18	201.06	0.18
2	-	-	-	-	163.26	0.19	153.27	0.19	-	-	148.56	0.20	-	-	-	-
3	-	-	137.44	0.20	107.71	0.22	-	-	-	-	-	-	116.17	0.21	125.68	0.21
4	100.18	0.22	95.80	0.23	-	-	95.72	0.23	-	-	95.80	0.23	85.88	0.23	-	-
5	-	-	66.71	0.25	63.23	0.26	72.22	0.25	-	-	-	-	59.08	0.26	61.52	0.26
6	-	-	-	-	-	-	53.68	0.27	55.08	0.27	-	-	-	-	46.78	0.28
7	-	-	-	-	37.70	0.30	-	-	39.29	0.30	-	-	-	-	-	-
8	31.36	0.32	-	-	-	-	-	-	30.71	0.33	28.43	0.34	-	-	-	-
9	24.56	0.36	-	-	22.25	0.38	23.57	0.37	25.53	0.35	23.10	0.37	22.78	0.37	-	-
10	-	-	21.60	0.39	-	-	21.42	0.39	21.26	0.39	-	-	20.57	0.40	-	-
11	-	-	19.07	0.43	19.56	0.42	20.00	0.41	19.55	0.42	20.11	0.41	-	-	-	-
12	-	-	17.89	0.47	18.00	0.46	17.78	0.47	18.03	0.46	-	-	17.81	0.47	-	-
13	-	-	-	-	17.63	0.48	-	-	-	-	-	-	-	-	-	-
14	-	-	17.42	0.49	17.31	0.50	17.44	0.49	17.17	0.52	-	-	-	-	-	-
15	-	-	-	-	-	-	17.04	0.53	-	-	-	-	-	-	-	-
16	-	-	-	-	-	-	16.90	0.56	16.85	0.57	-	-	-	-	-	-
17	-	-	-	-	16.64	0.76	-	-	-	-	-	-	-	-	-	-

**Figure 3: Dendrogram representing the inferred relationships of genetic similarity among the eight Indian *Channa* sp.**

In another investigation, the serum proteins of the female *Cyprinus carpio* and male *Ctenopharyngodon idella* were analysed using SDS-PAGE and it was stated that there were differences in the electropherogram of each species (Li, 1991). In another research, the serum protein profiles of parr- smolt in

masu salmon (*Oncorhynchus masou*) was analysed by two-dimensional SDS-PAGE which identified two proteins (43.80 kDa) as possible smolt-specific serum proteins that was confirmed using 2D SDS-PAGE (Ura *et al.*, 1994). UPGMA dendrogram generated from the RAPD data by Ajaz Ali *et al.* (2011)

stated that genetic relationship was very close between *C. aurantimaculata* and *C. bleheri*, *C. gachua* and *C. stewarti*, which was in accordance with our results. They also showed that, *C. marulius*, *C. striatus* and *C. diplogramme* as separate clades and were found to be genetically distant as reported in the present study.

Haniffa *et al.* (2014) investigated the phylogenetic relationship among five Channids namely *C. striatus*, *C. marulius*, *C. punctatus*, *C. diplogramme* and *C. gachua* using ISSR-PCR marker system and Principal Component Analysis (PCA) of morphometric and meristic characters. The genetic identity between the species ranged from 0.5526 to 0.7632 and the genetic distance ranged from 0.2703 to 0.5931. UPGMA dendrogram arrived by the morphological and molecular markers revealed the closeness between *C. striatus* and *C. marulius* among the five species whereas in the present study, both *C. striatus* and *C. marulius* were found in two different clades. Future studies using other biochemical as well as genetic markers like 2D gel electrophoresis and isoelectric focusing (IEF), hopefully will establish new ventures in the field of stock management and conservation of snakehead species.

In general, it can be concluded that all the eight species had varied differences in their protein banding pattern. Based on their protein banding pattern, the phylogenetic tree constructed shows that the species are more or less

closely related to each other. Further analysis using molecular markers will help to understand the genetic variability of *Channa* species.

Acknowledgement

We acknowledge the financial assistance received from Indian Council of Agricultural Research – National Agricultural Innovation Project (ICAR-NAIP F. No. 1(5)/2007-NAIP dt. 22 August 2008) to carry out this study. We are grateful to Rev. Dr. A. Joseph, S.J., Principal and Consortium Leader, for providing the necessary facilities and Dr. T.J. Pandian for his encouragement to carry out genetic diversity studies on Indian snakeheads.

References

- Bartke, E.M., Watt, D.D. and Tu, T., 1966.** Electrophoretic pattern of venoms from species of crotalidae and elapididae snakes. *Toxicology*, 4, 73-76.
- Benziger, A. Philip, S., Raghavan, R., Hamsa Anvar Ali, P., Sukumaran, M., Josin C. Tharian, Dahanukar, N., Baby, F., Peter, R., Rema Devi, K., Veetil Radhakrishnan, K., Abdulkather Haniffa, M., Britz, R., Antunes, A., 2011.** Unraveling a 146 years old taxonomic puzzle: validation of Malabar Snakehead species-status and its relevance for Channid systematic and evolution. *PLoS ONE*, 6(6), 21272.
- Bhat, A.A. Haniffa, M.A., Divya, P.R., Gopalakrishnan, A., James**

- Milton, M., Kumar, R. and Paray, B.A., 2011.** Molecular characterization of eight Indian snakehead species (Pisces: Perciformes Channidae) using RAPD markers.
- Crick, R.H.C., 1963.** On the genetic code. *Science New York*, 139, 461-464.
- Gam, L.H., Leow, Ch.Y. and Baie, S., 2006.** Proteomic analysis of snakehead fish (*Channa striata*) muscle tissue. *Malaysian Journal of Biochemistry and Molecular Biology*, 14, 25-32.
- Haniffa, M.A., 2010.** Indian snakeheads. *Fishing Chimes*, 30(1), 34-36.
- Haniffa, M.A., Jeya Sheela, P., James Milton, M., Kavitha, K., Bhat, A.A. and Chelliah, A., 2014.** Morphometric, meristic and ISSR marker systems for species identification and evolutionary analysis in five Indian Channids. *Biochemical Systematics and Ecology*, 55, 131-136.
- Huang, T.S., Marshall, M.R. and Wei, Ch.I., 2006.** Identification of red snapper (*Lutjanus campechanus*) using electrophoretic techniques. *Journal of Food Science*, 60(2), 279-283.
- Kapila, R. and Kapila, S., 1996.** Utility of electrophoresis in fisheries management and conservation. *Fishing Chimes*, 30(2), 15-17.
- Laemmli, U.K., 1970.** Cleavage of structural proteins during the assembly of the head of bacteriophage T4. *Nature*, 227, 680-685.
- Lamont, R.J., Petrie D.T., Melvin, W.T., Postlethwaite, R., 1986.** An investigation of the taxonomy of *Listeria* species by comparison of electrophoretic protein patterns. In : Courtieu A-L *et al.* (eds) *Listeriose Listeria Listeriosis 1985-86*, Proceedings of the 9th International Symposium on the Problems of Listeriosis, Universite de Nantes, pp. 41-46.
- Li, C., 1991.** Electrophoretic analysis on the serum proteins of xinggua red carp, grass carp and their hybrid F sub (1). *Freshwater Fish Danshui Yuye*, 6, 12-14
- Menon, A.G.K., 1989.** Taxonomy and speciation of fishes. In: *Fish genetics in India*. Proceedings of the Symposium on Conservation and Management of Genetic Resources of India, held on 11-13, April, 1986, pp. 75-82.
- Na-Nacron, U., Kamonart W. and Ngmsiri, T., 2004.** Genetic diversity of walking catfish, *Clarias macrocephalus*, in Thailand and evidence of genetic introgression from introduced farmed *Clarias gariepinus*. *Aquaculture*, 240, 145-163.
- Nirenberg, M.W., Mathaei, J.H., Jones, O.W., Martin, R.G. and Burondes, S.H., 1963.** Approximation of genetic code via cell free protein synthesis detected by template RNA. *Federation Proceedings*, 22, 55-61.

- Qasim, 1966.** The growth of the freshwater murrel, *Ophiocephalus punctatus* Bloch. *Hydrogiologica*, 27, 289-316.
- Rashed, M.A., Tantawi, T.M.A., Atta, A.H., Salah, S.H. and El-Ganal, A.A., 2000.** Plasma and muscle protein electrophoretic locality variations in catfish (*Clarias gariepinus* L.) *Egyptian Journal of genetics and Cytology*, 29 (2), 127-146.
- Saad, Y.M., Rashed, M.A., El-deep, S.I., El-Gamal, A.A. and Saiid, M.M., 2002.** Molecular genetic markers and phylogenetic relations for some tilapia species. ISSN1110-5372., 9th International Conference, Aleppo University, Syria. *Journal of Union Arab Biologists*. Cairo, 18, 27-44.
- Smith, P.J., 1990.** Protein electrophoresis for identification of Australian fish stocks. *Australian Journal of Marine and Freshwater Research*, 41, 6, 823-833.
- Ura, K., Hara, A., Kawamura, H., Yamauchi, K., 1994.** Immunochemical studies on serum proteins in juvenile masu salmon, *Oncorhynchus masou*. *Comparative Biochemistry Physiology*, 1078(2), 225-229.
- Venkita Krishnan, P., 1993.** Biochemical genetic studies on the oil sardine *Sardinella longiceps* (Cuvier and Valenciennes, 1847) from selected centres of the west coast of India. Ph. D. Thesis, Cochin University of Science and Technology, 143P.
- Vijayakumar, S., 1992.** Studies on biochemical genetics of the grey mullet, *Mugil cephalus* linnaeus. Ph.D. Thesis, Cochin University of Science and Technology, Kochi, India.
- Yilmaz, M., Cigremis, Y., Turkoz, Y., Gaffruoglu, M., 2005.** A taxonomic study on *Orthrias insignis euphraticus* (Banarescu and Nalbant, 1964) and *Cyprinion macrostomus* (Heckel, 1843) by sarcoplasmic protein electrophoresis. *Gazi University Journal of Science*, 18, 1, 61-68.
- Yilmaz, M., Yilmaz, H.R. and Alas, A., 2007.** An electrophoretic taxonomic study on serum proteins of *Acanthobrama marmid*, *Leuciscus cephalus* and *Chondrostoma regium*. *Eurasian Journal of Bioscience*, 1, 22-27.